

# Val Thorens Odalys Residence Tourotel Saturday- Saturday

73440 VAL-THORENS

Tel No. : +33 (0)4 79 09 43 43 - FaxNo. : +33 (0)4 79 00 08 18



---

## Your destination

---

Set in the Belleville valley and surrounded by 6 glaciers, Val Thorens is a unique ski resort located at an impressive altitude of 2300m surrounded by the slopes of the famous 3 Valleys ski area. This lively, family-friendly resort offers many, varied activities for all ages.

---

## Sport & leisure activities

---

Sports centre with aquaclub, Snow shoeing and hiking paths, Driving on ice (on the Andros circuit), Snow scooter, Mountain biking in the snow, Paragliding, Giant zip wire, The longest toboggan run in France

---

## Discover the region

---

The Vanoise national park

---

## The ski area

---

### **Ski area : Val Thorens - Orelle**

78 slopes, 150 km : 11 green, 29 blue, 29 red, 9 black  
32 ski lifts

**Ski area : the 3 Valleys** : Courchevel, La Tania, Méribel, Brides les Bains, St Martin de Belleville, Les Menuires, Val Thorens, Orelle

Minimum altitude : 1300 m - Maximum altitude : 3230 m

600 km : 51 green, 132 blue, 106 red, 32 black

168 ski lifts, 100 km of cross-country ski tracks

---

## Events - what's on

---

Andros Trophee, motor race on ice: December

Cama' Val Tho (family festivities during school holidays): February

---

## Your residence

---

In the lower part of the Peclet Hamlet, 300m from the resort centre, the Odalys Residence Tourotel is situated in a 6-floor building with 3 lifts and offers ski-in, ski-out access to the ski slopes. You have the choice of accommodation ranging from studios for 2 people to 1 bedroom apartments with sleeping alcove for 6 people all well-equipped with a functional kitchenette (microwave, dishwasher [except in the studios]), a bathroom with toilet and a balcony (for most accommodation). All holiday rentals are equipped with a television.

At your disposal : Free Wifi at reception, Table tennis equipment available, table football, billiards and pinball machine (extra charge).

---

## Accommodation

---

### Studio for 2 people (facing uphill) (approx. 16m<sup>2</sup>)

Living room with 2 single sofa beds  
Kitchenette (electric hob, fridge, microwave)  
Bathroom with toilet

### Studio for 2 people (facing downhill with balcony) (approx. 16m<sup>2</sup>)

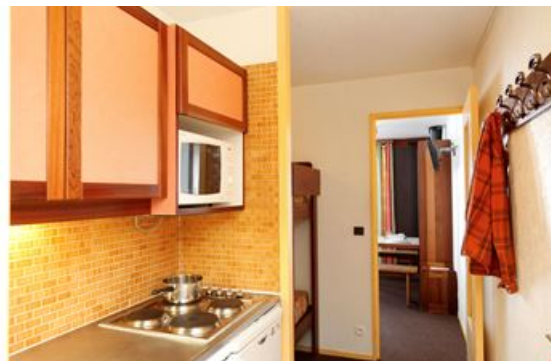
Living room with 2 single sofa beds  
Kitchenette (electric hob, fridge, microwave)  
Bathroom with toilet

### Studio with sleeping alcove for 4 people (slope views) (approx. 25.5m<sup>2</sup>)

Living room with 2 single sofa beds  
Sleeping alcove with bunk beds  
Kitchenette (electric hob, fridge, microwave, dishwasher)  
Bathroom with toilet

### 1 bedroom apartment with sleeping alcove for 6 people (slope views) (approx. 36 to 42m<sup>2</sup>)

Living room with 2 single sofa beds  
Bedroom with double bed  
Sleeping alcove with bunk beds  
Kitchenette (electric hob, fridge, microwave, dishwasher)  
Bathroom with separate toilet



---

## Rental conditions

---

### Conditions :

Price in Euros, per accommodation and per stay

*Prices valid until 31/03/19. Subject to modification after this date.*

Deposit to be paid on site on arrival : €300 / apartment

Deposit given back after inventory carried out on the day of departure or sent by post if departure outside opening hours.

Tourist tax to be paid on arrival : €0.99/person/day (valid for all guests over 18)

### Check-in & check-out :

For Saturday and Sunday arrivals, accommodation available from 5pm to 8pm.

*In the case of late arrival please inform your residence as soon as possible. You will be told the procedure to follow.*

For Saturday and Sunday departures, check-out by 10am.

---

## Reception

---

**Monday to Friday** : 9am-12 noon and 5pm-7pm

**Saturday** : 8am-10pm

**Sunday**: 8am-8.30pm

---

## Included in our prices

---

- Bed linen
- Bathroom linen (+ 2 tea towels)
- Television
- Internet & Wifi at reception
- Table tennis equipment

---

## Not included in our prices

---

*Price guide only, subject to modification, to be paid on site*

**Extra Services:**

- Table football : €1/game
- Billard table : €2/game
- Pinball machine : €1/game
- Baby equipment (cot, high chair, bath) (pre-booking required) : €25/stay, €8/day
- End of stay cleaning on request (except kitchen) : €35-€52/apartment
- Cleaning kit : €4-€6.50
- Kettle or toaster : €6/item
- Indoor and outdoor car parks : booking advisable at least 1 month prior to your arrival (Valthoparc - Tel: +33(0)4 79 00 02 49)
- Pets allowed\*: €35/stay/animal

*\* Please inform residence at the time of booking. Please supply proof of vaccinations. Dogs must be kept on a lead at all times within the residence grounds.*

**Please note :**

**FORMALITIES :**

- ID card or passport required for all guests (babies included). Drivers licence not valid.
- Please pay attention to your personal belongings and/or make use of the safe at reception (if applicable) during your stay. Odalys Vacances cannot be held responsible for damage or theft of personal belongings.

## Odalys advantages

- **Resort with « Famille Plus » Award**, family leisure & sports activities this winter



Go skiing this winter and enjoy the wide choice of activities in this award-winning family ski resort !

- **Ski passes**, preferential rates « Special Odalys »

Discounts up to 23% on 6-day ski passes by booking online with your accommodation (at the latest 5 days before arrival date). Free ski passes for children under 5 years old and people over 75 years old onsite (photo ID requested for all passes). Offer cannot be combined with other discounts or promotions. Discounts valid on pre-bookings only. Not valid for arrivals on : 21-28/12/19 and 08, 15, 22, 29/02/20 and 07/03/20.

- **Ski equipment**, pre-book skis and snowboards with Odalys

Odalys special deals with our local partner SKI TECHNIC. Contact the ski shop directly : skiboutique@fahrenheitseven.com - Tel. +33 (0)9 79 99 89 79

- **Ski school**, learn to ski for less



Discounts up to 15% off the public price for group ski lessons (downhill skiing, Nordic skiing, Snowboarding) for the 2019/20 ski season. **Offer valid on pre-bookings only made at the latest 15 days before arrival date. Tel: +33 (0)4 79 00 02 86 - esf@esf.me**

## Directions



### By car :

A43 motorway to Albertville, RN90 to Moûtiers then main road to Val Thorens.

### By train :

Moûtiers railway station. Shuttle bus Moûtiers-Val Thorens (timetable on [altibus.com](http://altibus.com)).

### By plane :

Lyon Exupéry (about 190 km), Genève Cointrin (about 160 km) Chambéry (115 km) airports.

### Please note :

*Tour de France 2019*

The 20th step of "Tour de France" is in Val Thorens this saturday 27/07/2019. The road will be inaccessible from 9.30am to 7.30pm. Please contact reception.

***The Odalys team wishes you a great holiday.***