

Saint Sorlin d'Arves Odalys Residence Les Chalets de la Porte des Saisons

73530 ST SORLIN D ARVES
Tel No. : +33 (0)4 79 59 42 23



Your destination

The resort village of Saint Sorlin d'Arves at the foot of the Croix de Fer in the heart of the Sybelles ski area offers wonderful views and varied sporting and leisure activities for a lively ski holiday.

Sport & leisure activities

Dog sledding, Snow shoeing trails outings, Mountain-biking on the snow (after the closure of the slopes), Tobogganing, Children's play area and toboggan run, Snowscooter tours, quadbiking, Paragliding, microlighting, Lasergame, Segway, Bowling

Discover the region

The cheese manufacturer of Arves (Beaufort), Baroque church of St Saturnin, Opinel knife museum

The ski area

Ski area : Saint Sorlin

- 42 slopes, 120km : 8 green, 16 blue, 13 red, 5 black
- 20 ski lifts : 9 drag lifts, 9 chairlifts, 2 magic carpets
- Freestyle modules : 1 snow park and easy park at L'Ouilleton

Ski area : Les Sybelles (Le Corbier, Saint Jean d'Arves, La Toussuire, Les Bottières, Saint Sorlin d'Arves et Saint Colomban des Villards)

- 128 slopes, 310 km : 23 green, 56 blue, 39 red, 10 black

Events - what's on

- La Magie des fêtes (Christmas & New Year festivities)
- Ice sculpture (open to public) : January
- Big Air : ski jump demonstrations : February
- "Sur les traces de Sorlinette" - visit the Beaufort cheese factory

Your residence

The Residence Les Chalets de la Porte des Saisons, situated in the upper part of the resort just 250m from the first shops, is composed of authentic mountain chalets. The residence offers accommodation ranging from studios for 2 people to 3 bedroom apartments for 9 people. All accommodation is pleasantly decorated in a cozy, chalet style and equipped with a functional kitchenette (microwave, dishwasher), a television at no extra charge, bathroom or shower room with toilet, balcony or terrace. Wifi access is available at an extra charge.

At your disposal : indoor, heated swimming pool, sauna (extra charge).

Accommodation

Studio for 2 people (approx. 19m²)

Living room with pull out bed or Z-bed for 2 people
Equipped kitchenette (electric hob, fridge, dishwasher, microwave / grill, coffee maker)
Shower room with toilet

1 bedroom apartment for 4 people (approx. 28 to 30m²)

Living room with pull out bed or Z-bed for 2 people
Bedroom with double or 2 single beds
Equipped kitchenette (electric hob, fridge, dishwasher, microwave / grill, coffee maker)
Bathroom or shower room with toilet

1 bedroom apartment for 6 people (approx. 29 to 38m²)

Living room with pull out bed or Z-bed for 2 people
Bedroom with double bed
Sleeping alcove with bunk beds
Equipped kitchenette (electric hob, fridge, dishwasher, microwave / grill, coffee maker)
Bathroom and separate toilet or shower room with toilet

2 bedroom apartment for 6 people (approx. 39 to 45m²)

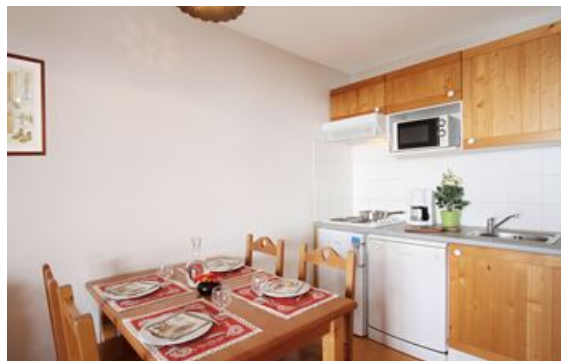
Living room with pull out bed or Z-bed for 2 people
Bedroom with double bed or 2 single beds
Bedroom with double bed or 2 single beds or bunk beds
Equipped kitchenette (electric hob, fridge, dishwasher, microwave / grill, coffee maker)
Bathroom and separate toilet

2 bedroom apartment for 8 people (approx. 43 to 54m²)

Living room with pull out bed or Z-bed for 2 people
Bedroom with 1 double bed
Bedroom with 2 single beds
Sleeping alcove with bunk beds
Equipped kitchenette (electric hob, fridge, dishwasher, microwave / grill, coffee maker)
Bathroom
Shower room and bathroom
2 separate toilets

3 bedroom apartment for 9 people (approx. 52 to 64m²)

Living room with pull out sofa bed for 2 people
2 bedrooms with double bed
Bedroom with 3 single beds or bunk beds + 1 single bed
Equipped kitchenette (electric hob, fridge, dishwasher, microwave / grill, coffee maker)
Bathroom or shower room on ground floor
Bathroom or shower upstairs
Separate toilet



Rental conditions

Conditions :

Price in Euros, per accommodation and per stay

Prices valid until 31/03/19. Subject to modification after this date.

Deposit to be paid on site on arrival : €300 / apartment (2 payments : apartment + cleaning)

Deposit given back after inventory carried out on the day of departure or sent by post.

Tourist tax included. Eco tax to be paid on arrival : €0.20/person/day (valid for all guests over 18 years old)

Check-in & check-out :

For Saturday arrivals, accommodation available from 5pm

In the case of late arrival please inform your residence before 8pm. You will be told the procedure to follow.

For Saturday departures, check-out by 10am (please make an appointment on Thursday morning for the inventory)

Reception

Sunday to Friday : 8am-10am and 4pm-7pm

Saturday : 2pm-8pm

Included in our prices

- Bed linen
- Access to the indoor, heated pool in the residence
- Television

Not included in our prices

Price guide only, subject to modification, to be paid on site

Extra Services:

- TV rental (already installed in the apartments) : €8/day, €42/week, €5/day (over 1 week)
- Baby equipment (cot, high chair, bath) (pre-booking required) : €8/day, €25/stay
- Bathroom linen (1 bath towel, 1 hand towel) : €8/set
- End of stay cleaning on request (except kitchen) : from €62/apartment
- Cleaning kit : €6
- Wifi access (2 connections only) : €8/day, €20/week, €30/2 weeks – Family pack (4 connections) : €35/week
- Sauna : €6/session/person, €25/5 sessions/person
- Pets allowed*: €60/stay/animal (over 7 nights), €12/day/animal (under 7 nights)

** Please inform residence at the time of booking. Please supply proof of vaccinations. Dogs must be kept on a lead at all times within the residence grounds.*

Please note :

FORMALITIES :


- ID card or passport required for all guests (babies included). Drivers licence not valid.
- Please pay attention to your personal belongings and/or make use of the safe at reception (if applicable) during your stay. Odalys Vacances cannot be held responsible for damage or theft of personal belongings.

Odalys advantages

- **Indoor, heated swimming pool**, enjoy a swim all year round !
- **Bon appetit !** Choose from our different formulas: 7 evening meals, half-board
Prices & info coming soon !

- **Ski passes, preferential rates** « Special Odalys »
Prices & info coming soon !

- **Ski equipment, pre-book skis and snowboards with Odalys**

SKISET  Odalys special deals with our local partner offering discounts up to 50% for full equipment packages (skis, ski poles, boots).

- **Ski school, learn to ski for less**

Discounts up to 10% off the public price for group ski lessons (downhill skiing, Nordic skiing, Snowboarding) for the 2019/20 ski season. **Offer valid on pre-bookings only made at the latest 15 days before arrival date. Tel : +33 (0)4 79 59 71 53 - contact@esf-saintsorlin.com**

Directions



By car :

A43 motorway to Chambéry, exit Saint Jean de Maurienne, turn right towards Vallée de l'Arvan on the D926, towards St Sorlin d'Arves.

Please note : access via Saint Jean de Maurienne only, the Glandon and La Croix de Fer mountain passes are closed in the winter.

By train :

St Jean de Maurienne railway station. TGV from Paris.
Onward journey by bus or taxi (to be reserved by phone).

By plane :

Lyon Saint Exupéry Chambéry or Geneva airports.

The Odalys team wishes you a great holiday.