

Pra Loup Odalys Residence Le Village de Praroustan

Lieu-dit Les Molanès
04400 PRALOUP 1500
Tel No. : +33 (0)4 92 30 00 70



Your destination

In the heart of a beautiful larch forest, the ski resort of Pra Loup offers exceptional views of the Southern Alps. Pra Loup 1500 is linked to Pra Loup 1600 by a free shuttle bus service.

Sport & leisure activities

Snow-shoeing outings, Natural skating rink, Snow scooter, Paragliding, hang-gliding, Indoor tennis court, Cinema, games room, Spa centre

Discover the region

Mexican centre and chocolate museum in Barcelonnette
Serre Poncon lake

The ski area

Ski area : Espace Lumiere - Pra Loup / La Foux d'Allos

- 78 slopes, 180 km : 10 green, 28 blue, 33 red, 7 black
- 39 ski lifts
- 6-seater chairlift giving access to Molanes cable car
- Freestyle modules : 1 snowpark and 3 boardercross
- 2 toboggan runs, 1 DVA park

Events - what's on

Xspeed Ski Tour: March
Entertainment throughout the season for all ages

Your residence

Residence in Pra Loup 1500 offering superb panoramic views of the surrounding mountains with the resort's ski lifts only a 5-minute drive away (car with snow chains recommended).

Comfortable and airy, the apartments all have a balcony and are full equipped with sleeping arrangements in the living room, a functional kitchen, bathroom with bath or shower and toilet as well as free TV and Wifi access.

At your disposal :

Indoor, heated swimming pool, well-being facilities (sauna, hamam) (extra charge) - closed on Saturday

Free Wifi, Laundry facilities, Ski lockers

Outdoor parking spaces available, Covered car park (extra charge, pre-booking required, places limited)

Accommodation

Studio apartment for 2 people (approx. 22m²)

Living room with zip beds (2 x 80cm x 190cm)

Equipped kitchen

Bathroom with bath or shower

Toilet

1 bedroom apartment for 4 people (approx. 32m²)

Living room with pull-out beds

Bedroom with double bed (160cm x 190cm)

Equipped kitchen

Bathroom with bath or shower, toilet

1 bedroom apartment with sleeping alcove for 6 people (approx. 39m²)

Living room with pull-out beds

Bedroom with double bed (160cm x 190cm)

Equipped kitchen

Bathroom with bath or shower, toilet

2 bedroom apartment for 6 people (approx. 54m²)

Living room with pull-out beds

2 bedrooms with double bed (160cm x 190cm)

Equipped kitchen

Bathroom with bath or shower, toilet

Apartment "Confort" for 6 people (approx. 54m²)

Living rooms with pull-out bed and zip beds (2 x 80cm x 190cm)

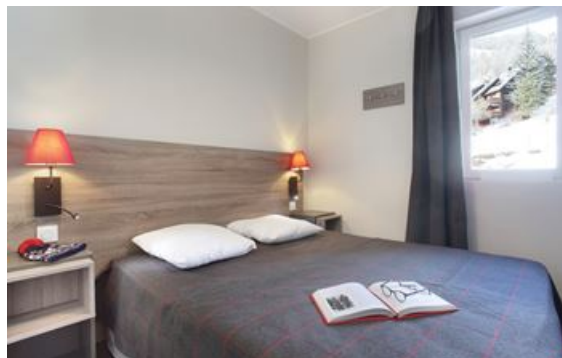
Bedroom with double bed (160cm x 190cm)

Sleeping alcove with bunk beds

Equipped kitchen

Bathroom with bath or shower, toilet

Please note: this accommodation consists of a studio apartment for 2 people and an adjoining 1 bedroom apartment for 4 people (layout varies in different apartments of this type)



Rental conditions

Conditions :

Price in Euros , per accommodation, per stay
Deposit to be paid on site on arrival in cash or credit card imprint : €300 / apartment
Deposit given back after inventory carried out or sent by post
Tourist tax to be paid on arrival : €1.70/day/person (from 18 years old)

Check-in & check-out :

Check-in from 5pm.

In the case of late arrival please inform reception as soon as possible. You will be told the procedure to follow.

Check-out by 10am.

Please note :**In the case of a problem on your arrival or during your stay :**

- Contact the reception and the personnel on site will do their best to resolve the problem.
- If the problem is not resolved on site, please contact the Odalys Vacances reservation call centre on 0825 562 562 from Monday to Saturday.

Reception

Sunday to Friday : 8am-10am and 4pm-7pm

Saturday : 3pm-8pm

Included in our prices

- Bed linen
- TV
- Wifi
- Access to indoor swimming pool

Not included in our prices

Price guide only, subject to modification, to be paid on site

Extra Services:

- Bathroom linen (1 bath towel, 1 hand towel) : €8/set
- Baby equipment (*high chair, cot, baby bath*) : €25/stay (pre-booking required)
- End of stay cleaning (on request) : €62/accommodation
- Indoor parking (pre-booking required, limited spaces) : €10/car/night €50/car/week
- Access to sauna/hammam : €20/person (unlimited access)
- Pets allowed*: €60/stay/animal (over 7 nights), €12/day/animal (under 7 nights)

** Please inform residence at time of booking. Please supply proof of vaccinations. Dogs must be kept on a lead at all times within the grounds.*

Please note :**FORMALITIES :**

- ID card or passport required for all guests (babies included). Drivers licence not valid.
- Please pay attention to your personal belongings and/or make use of the safe at reception (if applicable) during your stay. Odalys Vacances cannot be held responsible for damage or theft of personal belongings.

Odalys advantages

- **Resort with « Famille Plus » Award, family leisure & sports activities this winter**



Go skiing this winter and enjoy the wide choice of activities in this award-winning family ski resort !

- **Ski passes, preferential rates « Special Odalys »**

Discounts up to 32% on ski passes by booking online with your accommodation (at the latest 5 days before arrival date). Free ski passes for children under 5 years old and people over 75 years old onsite. *Offer cannot be combined with other discounts or promotions. Discounts valid on pre-bookings only.* **Please note** : The Pra Loup ski pass gives access to Val d'Allos via the Vallon des Agneliers but not via the resort itself. **Free "jeune" Ski passes** from 04/04 to 19/04/20, all skiers under 18 years old ski for free with the "jeune" ski pass ! No obligation to buy adult ski passes. Photo ID requested for all passes).

End of season special offer : for arrivals on 11/04/20 from Sunday 12/04 to Sunday 19/04/20 get 8 days of skiing for the price of 6 ! Offer can be combined with previous offer = free 8-day ski passes for skiers under 18 years old.

- **Ski equipment, book skis and snowboards with Odalys**



Odalys special deals with our local partner offering discounts up to 50% for full equipment packages (skis, ski poles, boots).

- **Bakery delivery service** *Information onsite*

- **Ski bus service**

Directions



By car :

From the north follow Lyon, Grenoble, Gap, Barcelonnette. From the south follow Aix en Provence, on the A51 to Tallard, Barcelonnette. Once in Pra Loup 1500 - Les Molanès, turn left toward the Molanès cable car.

Please note : certain mountain passes are closed in the winter season (Cols d'Allos, Col de la Cayolle, Col de la Bonnette Restefond)

Marseille (200 km), Lyon (290 km), Paris (710 km).

By train :

Arrive at Gap train station (70 km), then by bus to Barcelonnette, then free shuttle bus to Pra Loup or from the TGV Aix Arbois train station, then free shuttle bus to Pra Loup 1500 - Les Molanès (shuttle buses run only on Saturday).

By plane :

Marseille Provence airport, then direct bus to Pra Loup 1500 - Les Molanès (every Saturday).

The Odalys team wishes you a great holiday.