

Paris Odalys Apart'hotel Montmartre

7-9, rue Saint-Vincent
75018 PARIS
Tel No. : +33 (0)1 49 25 87 20



Your destination

The charming Montmartre district in Paris offers superb views of the capital city and the chance to visit the Sacre-Coeur Basilica as well as the Place du Tertre where the famous cartoonists amuse tourists with their caricatures of the rich and famous, the Dali centre or the Museum of Montmartre.

Sport & leisure activities

- City tours : Eiffel tower, Champs-Élysées, Montmartre, Pigalle; Opera, Paris Seine, le Marais, Chatelet
- Museums : Louvre, Grévin, Orangerie, Orsay, Picasso and Rodin
- Monuments : Arc de Triomphe, Notre Dame, Sacré-Cœur, Opera Garnier, Panthéon
- Parks & gardens : the Tuilleries, Parc des Buttes Chaumont

Discover the region

- Fontainebleau : beautiful, historical town south of Paris, with its 25,000 hectares of forest in Seine-et-Marne and its famous castle
- Barbizon, famous village loved by impressionists in the 19th century
- Theme parks : Park Astérix and Disneyland Paris
- Le Château de Versailles castle
- The Claude Monet foundation in Giverny

Your residence

Apart'hotel Paris Montmartre in a quiet area, just steps from the Sacre-Coeur Basilica in the famous district of the same name, has an interior courtyard and gardens and offers 72 holiday rentals sleeping 2 to 4 people. All are comfortably equipped with a safe, TV, bathroom with bath and equipped kitchenette.

Three holiday rentals are equipped to welcome guests with disabilities.

At your disposal :

Underground parking (extra charge, limited spaces), Laundry facilities (extra charge), Luggage storage, Well-being area with pool and hammam (extra charge), Free Wifi available in the apartments and communal areas.

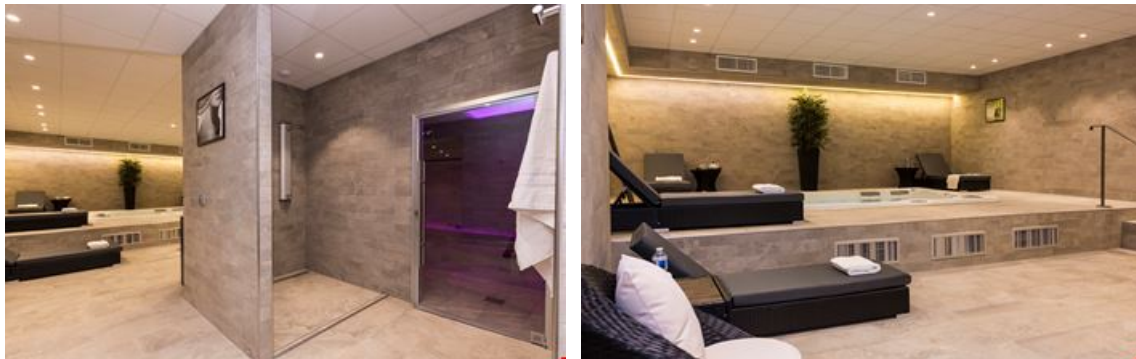
Accommodation

Studio apartment for 2 people (approx. 19m²)

Double bed (160x190cm) or 2 zip-beds (80x190cm)
Equipped kitchenette (hob, small fridge, microwave/oven, kettle, coffee machine)
Bathroom with bath, hair dryer, mirror
TV (international channels, Bein Sport), safe, Wifi

1 bedroom apartment for 2/4 people (approx. 30 to 32m²)

Living room with sofa bed
Bedroom with double bed (160x190cm) or 2 zip-beds (80x190cm)
Equipped kitchenette (hob, small fridge, microwave/oven, kettle, coffee machine)
Bathroom with bath, hair dryer, mirror
TV (international channels, Bein Sport), safe, Wifi



Rental conditions

Conditions :

Price in Euros, per accommodation, per stay

Deposit to be paid on site on arrival for residential formulas : €300/apartment (medium stay : 5-28 nights), €500/apartment (long stay : over 29 nights)

Tourist tax to be paid on arrival : €2.88/day/person

Check-in & check-out :

Check-in from 3pm

Check-out by 12 noon

Reception

Telephone : +33 (0)1 49 25 87 20

Included in our prices

- Luggage storage
- Wifi access
- TV
- Baby equipment



Hotel formula : *short stay - 1 to 4 nights*

- Bed linen (beds made on arrival)
- Bathroom linen and welcome pack
- Daily cleaning



Residential formulas : *medium stay 5 - 28 nights & long stay over 29 nights*

- Bed linen (beds made on arrival)
- Bathroom linen and welcome pack
- Weekly cleaning/bed & bathroom linen change (over 8 nights)
- Flexible check-in (possible every day)

Not included in our prices

Extra services to be paid on site:

- Well-being facilities with pool and hammam : €18/hour/person (open noon-10pm)
- Laundry facilities : washing machine : €4/machine, tumble dryer : €2/machine
- Bathroom linen (bath towel and hand towel + bath mat) : €7/set
- Breakfast buffet (7am-10am during the week / 7.30am-10.30am weekend) : €15/adult, €9/child (4-12 years old incl.)
- Underground car park : €25/day
- Cleaning service on request (5-7 nights) : from €12 (daily cleaning, beds made) or from €40 (full weekly cleaning service)
- End of stay cleaning (residential formula/medium stay 5-28 nights) : from €60
- Pets allowed* : €15/animal/day

** Please supply proof of vaccinations. Dogs must be kept on a lead at all times within the building and grounds. One animal per apartment only.*

Please note :

- We advise the use of public transport

FORMALITIES :

- ID card or passport required for all guests (babies included). Drivers licence not valid.
- Please pay attention to your personal belongings and/or make use of the safe at reception (if applicable) during your stay. Odalys Vacances cannot be held responsible for damage or theft of personal belongings.

Directions



The Odalys team wishes you a great holiday.