

## Luchon Odalys Residence Illixon

Résidence Odalys Illixon 14 Allées d'Etigny  
31110 BAGNERES DE LUCHON  
Tel No. : +33 (0)5 61 88 14 97



---

### Your destination

---

The charming, historical town of Luchon is fondly called the Queen of the Pyrenees and is much appreciated for its skiing and its beautiful natural setting.

---

### Sport & leisure activities

---

2 fitness centres  
Cinema, disco, library, bars and restaurants  
Museum of Luchon

---

### Discover the region

---

Mountain lakes, Botanical tours of the Val d'Esquiery, Spanish border (20 minutes away)

---

### The ski area

---

**Ski area : Luchon Superbagneres** - ski area accessible via the cable car (8 mins) or by car (17km)  
29 slopes, 32km : 4 green, 12 blue, 7 red, 6 black  
15 ski lifts  
1 snowpark, sledging run  
4km of cross-country skiing tracks, 178 snow guns

---

### Events - what's on

---

Festival des créations télévisuelles (TV festival) in Luchon : February

---

## Your residence

---

In the heart of the historical centre, the Odalys Residence Illixon, just 100m from the cable car and 600m from the thermal baths, houses accommodation ranging from studios for 2 people to 2 bedroom apartments for 7/8 people in 2 buildings. All have a functional kitchenette (microwave/oven, dishwasher, etc), bathroom or shower room with toilet. You have the possibility to rent a TV and have Wifi access (extra charge).

**Please note** : if you require 2 or more adjacent apartments, please contact the residence directly before confirming your booking.

*One studio for 2/3 people, one 1 bedroom apartment for 4 people and one 2 bedroom apartment for 6/7 people are equipped to welcome guests with disabilities with a specially adapted bathroom and toilet.*

At your disposal : ski lockers, laundry facilities (extra charge), parking (extra charge, pre-booking required due to limited spaces).

---

## Accommodation

---

### Studio for 2 people (approx. 23m<sup>2</sup>)

Living room with pull out bed for 2 people  
Equipped kitchenette (fridge, electric hob, microwave, dishwasher)  
Bathroom or shower room with toilet

### Studio for 2/3 people (approx. 26m<sup>2</sup>)

Living room with pull out bed for 2 people + single fold out bed  
Equipped kitchenette (fridge, electric hob, microwave, dishwasher)  
Bathroom or shower room with toilet

### Studio with sleeping alcove for 4 people (approx. 31m<sup>2</sup>)

Living room with pull out bed for 2 people  
Sleeping alcove with bunk beds  
Equipped kitchenette (fridge, electric hob, microwave, dishwasher)  
Bathroom or shower room with toilet

### 1 bedroom apartment for 4 people (approx. 33m<sup>2</sup>)

Living room with pull out bed for 2 people  
Bedroom with a double bed  
Equipped kitchenette (fridge, electric hob, microwave, dishwasher)  
Bathroom or shower room with toilet

### 1 bedroom apartment for 4/5 people (approx. 38m<sup>2</sup>)

Living room with pull out bed for 2 people  
Bedroom with a double bed + 1 single fold out bed or 1 single bed  
Equipped kitchenette (fridge, electric hob, microwave, dishwasher)  
Bathroom or shower room with toilet

### 2 bedroom duplex apartment for 6 people (approx. 48m<sup>2</sup>)

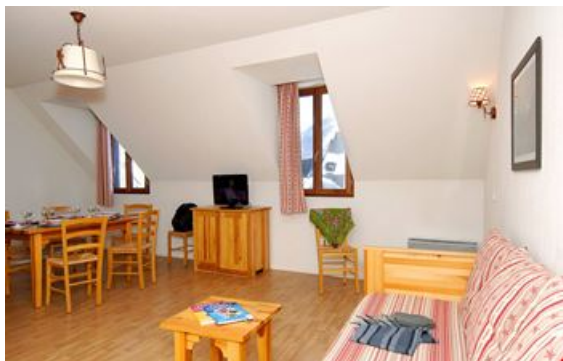
Living room with pull out bed for 2 people  
Bedroom with a double bed  
Bedroom with 2 single beds  
Equipped kitchenette (fridge, electric hob, microwave, dishwasher)  
Bathroom or shower room, separate toilet

### Duplex apartment for 6/7 people (approx. 56m<sup>2</sup>)

Living room with pull out bed for 2 people  
2 bedrooms each with a double bed + single fold out bed in the living room or 1 single bed in one of the bedrooms **OR**  
1 bedroom with 3 single beds and 1 bedroom with double bed  
Equipped kitchenette (fridge, electric hob, microwave, dishwasher)  
Bathroom or shower room, separate toilet

### 2 bedroom duplex apartment for 7/8 people (approx. 62m<sup>2</sup>)

Living room with pull out bed for 2 people  
2 bedrooms each with a double bed  
+ bunk beds in one of the bedrooms **OR** alcove with bunk beds in the living room  
Equipped kitchenette (fridge, electric hob, microwave, dishwasher)  
Bathroom or shower room, separate toilet



---

## Rental conditions

---

### Conditions :

Price in Euros, per accommodation and per stay

Deposit to be paid on site on arrival : €300 / apartment (2 payments : apartment + cleaning)

Deposit given back after inventory carried out on the day of departure or sent by post if departure outside opening hours.

Tourist tax to be paid on arrival : €1.10/person/night (valid for all guests over 18)

### Check-in & check-out :

For Saturday arrivals, accommodation available from 5pm. Depending on reception opening hours, you have the possibility to check in during the afternoon but the keys will be supplied at 5pm. *In the case of late arrival please inform your residence as soon as possible. You will be told the procedure to follow.*

For Saturday departures, check-out by 10am.

---

## Reception

---

**Monday, Tuesday, Thursday, Friday** : 10am-12 noon and 4pm-7pm, **Saturday** : 8am-11am and 3pm-8pm

**Sunday** : 10am-12 noon, closed in the afternoon , **Wednesday** : Closed

---

## Included in our prices

---

- Accommodation rental
- Bed linen (except « Special curistes » formula)
- Ski lockers

---

## Not included in our prices

---

*Price guide only, subject to modification, to be paid on site*

### Extra Services:

- TV rental (already installed in the apartments) : €8/day, €40/week, €5/day (over 1 week)
- Baby equipment (*high chair, cot and baby bath*) (pre-booking required) : €25/stay, €8/day
- Wifi access (2 connections only) : €8/day, €20/week, €30/2 weeks – Family pack (4 connections) : €35/week
- Laundry facilities : prices on site
- Bathroom linen (1 bath towel, 1 hand towel) : €7.50/set
- End of stay cleaning on request (except kitchen) : from €60/apartment
- Car parks (pre-booking required due to limited spaces) : Outdoor €15, Indoor €30
- Pets allowed\*: €50/stay/animal, €10/day/animal

\* Please inform residence in advance and supply proof of vaccinations. Dogs must be kept on a lead at all times.

### Please note :

#### FORMALITIES :

- ID card or passport required for all guests (babies included). Drivers licence not valid.
- Please pay attention to your personal belongings and/or make use of the safe at reception (if applicable) during your stay. Odalys Vacances cannot be held responsible for damage or theft of personal belongings.

## Odalys advantages

- **Odalys Well-being**, *Sauna, hammam, whirlpool... discover our offers !*  
Preferential rates « Special Curistes » (thermal cures) from March onwards.  
*Info and bookings on-site : +33 (0)5 61 88 14 97*

- **Ski passes**, *preferential rates « Special Odalys »*  
Discounts up to 22% on ski passes by booking online with your accommodation (at the latest 5 days before arrival date). Free ski passes for children under 5 years old and people over 75 years old - ski passes to be collected at the ski pass office (ID requested).  
*Offer cannot be combined with other discounts or promotions. Discounts valid on pre-bookings only.*

- **Ski equipment**, *pre-book skis and snowboards with Odalys*

**SKISET**  Odalys special deals with our local partner offering discounts up to 40% (depending on dates) for full equipment packages (skis, ski poles, boots).

- **Ski school**, *learn to ski for less*



Discounts of 10% off the public price for group ski lessons (downhill skiing, Nordic skiing, Snowboarding) for the 2017/18 ski season. *Age groups, days and hours vary in different schools.* **Offer valid on pre-bookings only at the latest 15 days before arrival date. Tel: +33 (0)5 61 79 08 75 - [esf-superbagneres@wanadoo.fr](mailto:esf-superbagneres@wanadoo.fr)**

## Directions



### By car :

A620 motorway from Toulouse, exit Montréjeau and take the main road for 40 km, follow signs to the town centre of Luchon (do not go up to Superbagnères).

### By train :

Luchon railway station

### By plane :

Toulouse/Blagnac (140 km) and Tarbes/Ossun/Lourdes airports (110 km).

***The Odalys team wishes you a great holiday.***