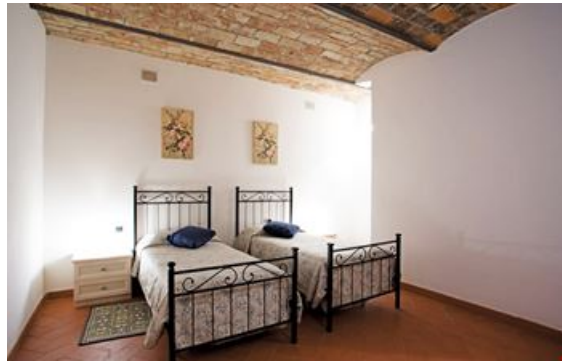


## Florence Prestige apartment Palazzo Virginio

Via Chibellina 7  
50122 FLORENCE  
Tel No. : 00.39 055 200 85 54 - Fax No. : 00.39 055 248 08 99



---

### Your destination

---

Capital of Tuscany, birthplace of the Renaissance, Florence is one of the most beautiful cities in Italy with an exceptional artistic heritage. Discover the secrets of this charming town by wandering through the many tiny streets.

---

### Sport & leisure activities

---

The Galleria dell'Accademia (home to works by Michelangelo)  
The Gallery des Offices  
The Museum National Il Bargello  
The Museum of San Marco  
The Museum of Cathedral  
The Museum of History of Science  
The Gallery of the Hospital des Innocents  
Bars discotheques, restaurants

---

### Discover the region

---

- Tuscan cities : Siena, Pisa, San Gimignano  
- Vineyards

---

## Your residence

---

Residence offering accommodation right in the heart of the famous city of Florence, 200 metres from the old town, 300m from the river Arno and only 10km from Florence (Peretola) airport. Everything is accessible on foot : museums, monuments, restaurants, shops, supermarket, etc. The Palazzo Virginio residence is made up of 19 apartments, each spacious and tastefully decorated ranging from the studio apartment for 2 to the 3 bedroom apartment for 8 people. Each is fully equipped with kitchenette (with oven), bathroom or shower room with toilet, air-conditioning, satellite TV and generally a terrace.

At your disposal : Car park (1 parking space per apartment), Free WiFi, Laundry facilities (open 24 hours a day), Air-conditioning.

---

## Accommodation

---

### **Studio apartment for 2 people (approx. 50m<sup>2</sup>) with terrace**

Living room with a double bed  
Equipped kitchen (4 gas rings, electric oven)  
Bathroom or shower room, toilet  
Terrace

### **1 bedroom apartment for 4 people (approx. 70m<sup>2</sup>)**

Living room with a sofa bed for 2 people  
Equipped kitchen (4 gas rings, electric oven)  
1 double bedroom  
Bathroom or shower room, toilet

### **1 bedroom apartment for 4 people (approx. 70m<sup>2</sup>) with terrace**

Living room with a sofa bed for 2 people  
Equipped kitchen (4 gas rings, electric oven)  
1 double bedroom  
Bathroom or shower room, toilet  
Terrace

### **2 bedroom apartment for 6 people (approx. 100m<sup>2</sup>)**

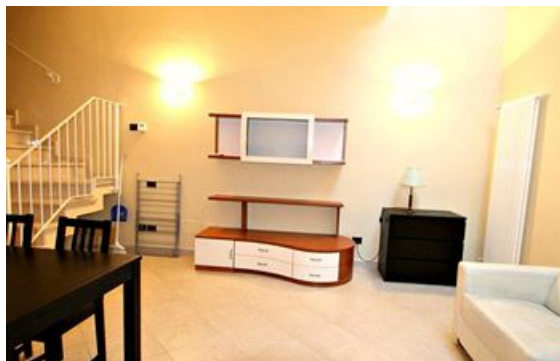
Living room with a sofa bed for 2 people  
Equipped kitchen (4 gas rings, electric oven)  
1 double bedroom  
1 bedroom with 2 single beds  
Bathroom or shower room, toilet

### **2 bedroom apartment for 6 people (approx. 100m<sup>2</sup>) with terrace**

Living room with a sofa bed for 2 people  
Equipped kitchen (4 gas rings, electric oven)  
1 double bedroom  
1 bedroom with 2 single beds  
Bathroom or shower room, toilet  
Terrace

### **3 bedroomed apartment for 8 people (approx. 135m<sup>2</sup>)**

Living room with a sofa-bed for 2 people  
Equipped kitchen (4 gas rings, electric oven)  
2 double bedrooms  
1 bedroom with 2 single beds  
Bathroom or shower, toilet



---

## Rental conditions

---

### Conditions :

Prices in euros, per apartment for 3 or 7 nights

Deposit to be paid on site on arrival : €200 / apartment

Deposit given back after inventory carried out

Tourist tax to be paid on arrival : €3/night/person (valid for all guests over 12 years old), max. 7 nights

### Check-in & check-out :

Check-in from 2pm to 5pm.

*In the case of late arrival please inform reception as soon as possible. You will be told the procedure to follow.*

**Please note:** check-in not possible after 6pm

Check-out by 10am.

### Please note :

**In the case of a problem on your arrival or during your stay :**

- Contact the reception and the personnel on site will do their best to resolve the problem.
- If the problem is not resolved on site, please contact the Odalys Vacances reservation call centre on 0825 562 562 from Monday to Saturday.

---

## Included in our prices

---

- Bed and bathroom linen
- Parking (1 space per apartment)
- Water, gas and electricity
- End of stay cleaning (except kitchen)
- Air-conditioning
- Satellite TV
- Wifi
- Laundry facilities
- Cot (on request)
- Charges for pets

---

## Not included in our prices

---

*Price guide only, subject to modification, to be paid on site*

### Extra Services:

- Parking for extra vehicles (please inform reception at time of booking) : €15/day

### Please note :

#### FORMALITIES :

- ID card or passport required for all guests (babies included). Drivers licence not valid.
- Please pay attention to your personal belongings and/or make use of the safe at reception (if applicable) during your stay. Odalys Vacances cannot be held responsible for damage or theft of personal belongings.

## Odalys advantages

- **Free bed linen, in your holiday rental**

Don't overload your suitcases with bed linen, Odalys supplies everything for free !

- **Free bathroom linen, in your holiday rental**

Don't overload your suitcases with towels, Odalys supplies everything for free !

- **End of stay cleaning service included.** *Enjoy your holiday to the very last minute !*

For a truly relaxing holiday, Odalys look after everything right to the very last minute.  
(Please note: kitchen area not included). Please leave the accommodation in good order.

## Directions



### By car :

From Genova : Motorway A 12 towards Lucca, exit Viareggio and continue on the motorway A11 for Florence, exit at Peretola (airport) and take the Zoroastro Da Peretola road, continue to viale Rede and go round the whole ring road (Viale Strozzi, towards Piazza Della Libertà, viale Matteotti, towards Piazzale Donatello, Viale Antonio Gramsci, towards Piazza Beccaria, Viale della Giovine Italie, towards Piazza Piave), then turn right at the traffic lights parallel to the river Aron, towards Ponte Vecchio, take the 2nd right Via Delle Casine, at the end of this road turn right for 100m to Palazzo Virgilio rue Ghibellina, No. 7.

### By plane :

Florence Peretola airport (10 km).

From « Amarigo Vespucci », the international airport of Florence you can take a taxi (20 min)

There are also shuttles from the airport to the central station (Santa Maria Novella) and from the station take the bus n°14, terminus rue Ghibellina (5 mins) From the international airport of Pisa « Galileo Galilei » you can take a direct train to Florence then the shuttle to the station of Santa Maria Novelle and from the station take the bus n°14, terminus, rue Ghibellina (5 mins).

***The Odalys team wishes you a great holiday.***