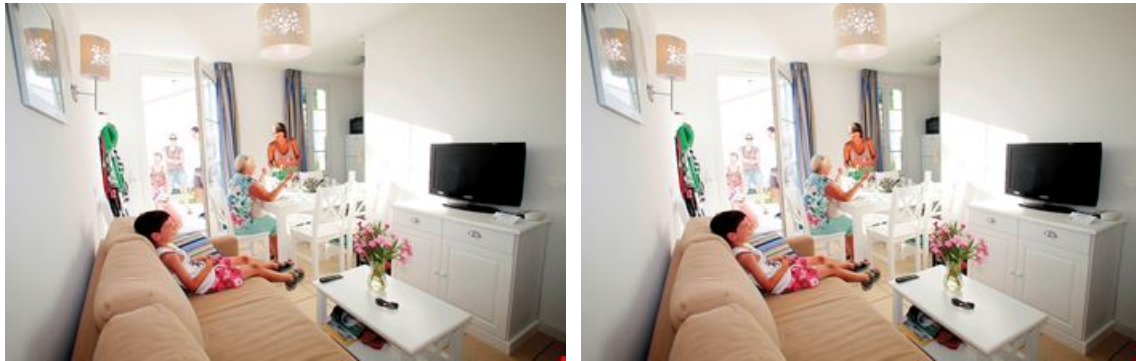


Ile d'Oléron Odalys Residence Terre Marine

Rue Normand d'Authon "La Brimaudière"
17310 ST PIERRE D OLERON
Tel No. : +33 (0)5 46 75 33 23 - Fax No. : +33 (0)5 46 75 32 07



Your destination

Located south of Ile de Ré, opposite the town of Rochefort-sur-Mer, Ile d'Oléron is the largest French island off the Atlantic coast and is often called "l'île aux parfums" and is much appreciated for its sunny climate and beautiful beaches.

Sport & leisure activities

Boat trips, fishing
Golf, horse riding
Cycling, hiking
Thalassotherapy centre
Water sports: surfing, sailing, wind surfing, SCUBA diving, etc.
Little tourist train de Saint Trojan (200m from the Monplaisir mobile home campsite)

Discover the region

The Château d'Oléron
Boat trips to Fort Boyard
Chassiron lighthouse in Saint Denis
Oyster farm in Fort Royer
La Cotinière chapel and port
Le marais aux Oiseaux (bird sanctuary) in Dolus
Le port des Salines in Grand Village
100km of cycle paths

Events - what's on

There are many different events all throughout the summer in Oléron (please consult the list of suggestions and brochures at the reception of your residence).

Your residence

Not far from the beach and 3km from the centre of Saint Pierre d'Oléron, the Odalys Residence Terre Marine consists of holiday rentals in bungalows with terrace with 1 bedroom for 4 people or 2 bedrooms for 6 people. Each has a TV and Wifi access (both at an extra charge).

The 1 bedroom bungalows for 4 people are equipped to welcome guests with disabilities.

At your disposal : Outdoor, heated swimming pool with paddling pool (open from mid-April to end September), petanque ground, table tennis, laundry facilities (extra charge), free outdoor parking, and bike rental on site.

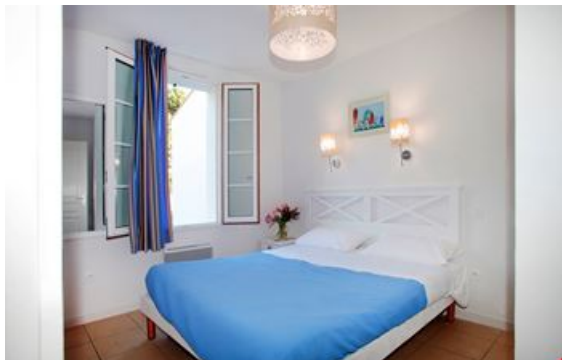
Accommodation

1 bedroom bungalow for 4 people (approx. 35m²)

Living room with 2 pull-out beds
Bedroom with double bed
Equipped kitchenette (ceramic hob, microwave/grill, fridge, dishwasher)
Shower room with toilet

2 bedroom bungalow for 6 people (approx. 36m²)

Living room with 2 pull-out beds
Bedroom with double bed
Bedroom with bunk beds
Equipped kitchenette (ceramic hob, microwave/grill, fridge, dishwasher)
Shower room, separate toilet



Rental conditions

Conditions :

Price in Euros, per accommodation, per stay

Deposit to be paid on site on arrival : €300 / apartment (2 payments : apartment €244 + cleaning €56)

Deposit given back after inventory carried out on the day of departure or sent by post if departure outside opening hours.

Tourist tax to be paid on arrival : €2.31/person/night (valid for all guests over 18 years old)

Check-in & check-out :

Rental Formula : check-in from 5pm, check-out before 10am

"Escapade" Formula : check-in from 4pm, check-out before 11am

In the case of late arrival please inform reception as soon as possible. You will be told the procedure to follow.

Reception

Monday, Tuesday, Thursday, Friday : 10am-12 noon and 4pm-7pm

Saturday : 3pm-8pm

Sunday : 10am-12 noon

Wednesday : Closed all day

Included in our prices

Rental Formula :

- Bed linen
- Access to outdoor, heated pool and paddling pool
- Table tennis
- Petanque ground
- Outdoor parking
- Welcome drink in July & August

"Escapade" Formula : short stays

- Services included in rental formula
- Bed linen
- Bathroom linen
- End of stay cleaning (except kitchen & washing up)

Not included in our prices

Price guide only, subject to modification, to be paid on site

Extra Services:

- TV rental (already installed in the apartments) : €8/day, €42/week, €5/day (over 1 week)
- Baby equipment (cot, high chair, bath) (pre-booking required) : €8/day, €25/stay
- Wifi access (2 connections only) : €8/day, €20/week, €30/2 weeks, €35 (Family Pack = 4 connections)
- Laundry facilities : prices on site
- Bathroom linen (1 bath towel, 1 hand towel) : €8/set
- End of stay cleaning on request (except kitchen) : from €62/apartment
- Bike rental on site : prices on site
- Pets allowed*: €60/stay/animal (over 7 nights), €12/day/animal (under 7 nights)

** Please inform residence at the time of booking. Please supply proof of vaccinations. Dogs must be kept on a lead at all times within the residence grounds.*

Please note :

FORMALITIES :

- ID card or passport required for all guests (babies included). Drivers licence not valid.
- Please pay attention to your personal belongings and/or make use of the safe at reception (if applicable) during your stay. Odalys Vacances cannot be held responsible for damage or theft of personal belongings.

Odalys advantages

- **Free bed linen**, in your holiday rental

Don't overload your suitcases with bed linen, Odalys supplies everything for free !

- **Resort's « Famille Plus » award**, all your family leisure and sports activities on your next holidays

Book your family holidays in this resort awarded the « Famille Plus » label.

- **Pets welcome**, in your holiday rental

On your Odalys holiday, don't leave home without them !

Directions



By car :

Motorway A10 to Saintes and direction Ile d'Oléron. Follow Saint Pierre d'Oléron. Once in Saint Pierre d'Oléron, turn left at the traffic lights by the gendarmerie. Go straight on and turn right just after Tardet Pradère.

GPS :Lat. 45.930242. Long. - 1.333852

By train :

Rochefort railway station.

By plane :

La Rochelle airport. During the summer, link between the airport and station of Rochefort.

The Odalys team wishes you a great holiday.