

Pals - Playa de Pals Residence Green Mar

Calle de Golf
17256 PLAYA DE PALS
Tel No. : +34 972 636 086



Your destination

Opposite the Mèdes island right in the heart of the Costa Brava, the medieval town of Pals in the province of Gerona, 1 hour from the French border, offers a rich cultural heritage, beautiful landscapes and beaches and wonderful gastronomy.

Sport & leisure activities

Water sports
Golf
Tennis
Boat trips

Discover the region

The ancient village of Begur, its town walls, its towers and its magnificent panorama
Barcelona, Girona
Cruise to the Mèdes islands
PortAventura theme park in Salou

Your residence

Attractive residence situated only 150m from the golf course, just 1km from the beach and the town centre of Playa de Pals and 4km from the town centre of Pals. This residential complex comprises 60 apartments with either 2 bedrooms for 4/5 people or 3 bedrooms for 6 people. Each apartment is equipped with a kitchenette (oven, microwave, dishwasher, washing machine), a bathroom as well as a terrace and garden furniture.

At your disposal :

Non-heated outdoor swimming pool (open according to the weather)

Free outdoor car park (1 parking space/apartment).

Accommodation

2 bedroom apartment for 4/5 people (approx. 60m²)

Living room with single sofa bed, TV (Spanish channels)

Bedroom with 2 single beds

Bedroom with double bed

American-style kitchen (washing machine, dishwasher, oven, microwave, fridge)

Bathroom

Terrace with garden furniture

3 bedroom apartment for 6 people (approx. 85m²)

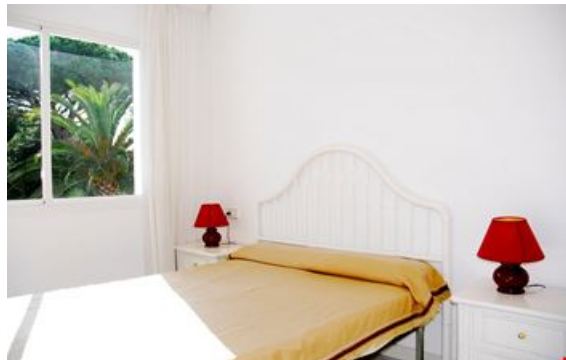
Living room with single sofa bed, TV (Spanish channels)

3 bedrooms with 2 single beds

American-style kitchen (washing machine, dishwasher, oven, microwave, fridge)

2 bathrooms or shower rooms

Terrace with garden furniture



Rental conditions

Conditions :

Price in Euros, per accommodation, per stay

Deposit to be paid on site on arrival in cash or credit card (VISA) : €250 / apartment

Deposit given back after inventory carried out

Tourist tax to be paid on arrival : €0.90/day/person (valid for all guests over 16 years old), max. 7 nights

Check-in & check-out :

Check-in from 5pm to 7pm

In the case of late arrival please inform the agency as soon as possible. You will be told the procedure to follow.

A €30 administration fee will be charged on arrival.

Check-out by 10am.

Please leave the accommodation tidy.

Please note :

In the case of a problem on your arrival or during your stay :

- Contact the reception and the personnel on site will do their best to resolve the problem.

Key collection

CEIGRUP TORRENT API
C/Abeurador N° 26
17256 PALS
Tel +34 972 636 086

Reception

Monday to Saturday : 9am to 1pm and 3pm to 7pm.

Sunday : 10am to 1pm (July & August)

Included in our prices

- Bed linen
- Free outdoor car park (1 parking space/per apartment)
- Access to the swimming pool

Not included in our prices

Price guide only, subject to modification, to be paid on site

Extra Services:

- End of stay cleaning : €45/2 bedrooms for 4/5 people, €55/3 bedrooms for 6 people
- Cot : €6/day, €42/week
- Late arrival fee : €30/accommodation
- Pets allowed* : €9/day, €63/week

** Please inform residence at time of booking. 1 animal per apartment only. Please supply proof of vaccinations against rabies and a health check-up certificate dated within the last 3 months. Dogs must be kept on a lead at all times within the grounds.*

Please note :

FORMALITIES :

- ID card or passport required for all guests (babies included). Drivers licence not valid.
- Please pay attention to your personal belongings and/or make use of the safe at reception (if applicable) during your stay. Odalys Vacances cannot be held responsible for damage or theft of personal belongings.

Directions



By car :

Motorway A7 exit N°6 Girona north, follow Palamos on the C66. After La Brisbal, follow Playa de Pals.

Key collection :

Address : CEIGRUP TORRENT API C/ Abeurador N° 26, 17256 PALS

Take the AP7 towards Barcelona. Exit N° 6 Girona North. Follow Palamos and Pals. Once in Pals : continue for 200m, turn left onto Carrer de l'Abeurador and continue for 200m, then take left onto Plaça de Catalunya. You have arrived at Carrer de l'Abeurador 26, 17256 Pals.

By plane :

Girona airport

The Odalys team wishes you a great holiday.