

## Cambrils Residence Sol Cambrils Park

Avenida de la Diputacion 41,  
43850 CAMBRILS  
Tel No. : 00 34 902 886 925



---

### Your destination

---

Located in the heart of the Costa Dorada, the town of Cambrils, close to Salou, is one of the most typical towns of the Spanish Mediterranean coast. You can enjoy the marina, wonderful, quiet beaches and a rich and tasty gastronomy.

---

### Sport & leisure activities

---

Water sports and activities on the beach: sailing, sea kayaking, wind surfing, fishing, diving, boat trips, parascension, water skiing, kite surfing  
Hiking, cycling and mountain biking  
Quad biking  
Golf  
Disco

---

### Discover the region

---

Roman city of Tarragona  
Visit of the Delta del Ebre «the Spanish Camargue»  
Barcelona (about 100km away)  
PortAventura theme park in Salou (3km away)  
Aquopolis water and fun park

---

## Your residence

---

Residence on the sea front in Cambrils just 150m from the beach and 800m from the town centre and the port with shops and facilities (bars and restaurants etc.) just a stone's throw away and only a few kilometers from the PortAventura theme park. The nicely decorated holiday rentals for 4 and 6 people are equipped with air-conditioning/heating, equipped kitchen, TV and bathroom(s) and a furnished balcony and are situated in a 4-storey building (with lift) right on the seafront.

At your disposal : 2 outdoor swimming pools (open from mid-June to the end of September), paddling pool, Spa : heated, indoor pool, spa bath, sauna, Paddle court, Volleyball and basketball ground, Gym, 1 parking space/apartment

---

## Accommodation

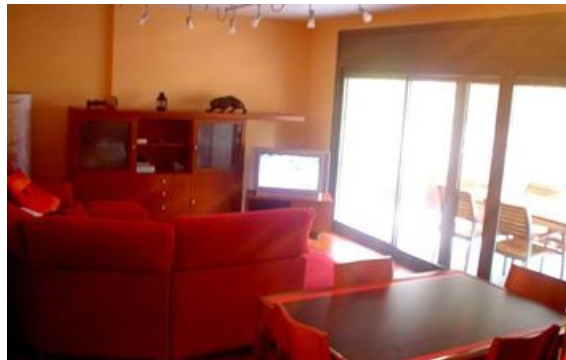
---

### 2 bedroom apartment for 4 people with air-conditioning (approx. 55m<sup>2</sup>)

Living room with sofa and TV  
Bedroom with a double bed  
Bedroom with 2 single beds  
Equipped kitchen (ceramic hob, oven, microwave, fridge, washing machine, dishwasher)  
Bathroom with bath and toilet  
Balcony with garden furniture

### 3 bedroom apartment for 6 people with air-conditioning (approx. 65m<sup>2</sup>)

Living room with sofa and TV  
Bedroom with a double bed  
Bedroom with 2 single beds  
Bedroom with pull-out bed for 2 people  
Equipped kitchen (ceramic hob, oven, microwave, fridge, washing machine, dishwasher)  
2 bathrooms (1 with bath and 1 with shower) toilet  
Balcony with garden furniture



---

## Rental conditions

---

### Conditions :

Price in Euros, per accommodation, per stay  
Deposit to be paid on site on arrival in cash or credit card imprint : €400 / apartment  
Deposit given back after inventory carried out  
Tourist tax to be paid on arrival : €0.90/day/person (valid for all guests over 17 years old), max. 7 nights

### Check-in & check-out :

Check-in from 5pm to 8pm  
*In the case of late arrival after 8pm, please inform reception as soon as possible. You will be told the procedure to follow.*  
Check-out by 10am. Please leave the accommodation clean and tidy.

### Please note :

#### In the case of a problem on your arrival or during your stay :

- Contact the reception and the personnel on site will do their best to resolve the problem.

---

## Key collection

---

Alquiler Selamina ( Selamina Business)  
Avenida de la Diputacion 38, local N°11  
43850 Cambrils  
Tel : +34 902 886 925 // +34 630 965 326

---

## Reception

---

**Every day :**

10am-3.30pm and 5pm-8pm

---

## Included in our prices

---

- Bed linen
- Access to the 2 outdoor swimming pools from mid June
- Access to indoor, heated swimming pool, spa bath, sauna
- Access to gym, paddle court, volleyball and basketball court
- Outdoor parking (1 space/apartment)

---

## Not included in our prices

---

*Price guide only, subject to modification, to be paid on site*

**Extra Services:**

- Bathroom linen : €10/person

**Please note :**

- Pets not allowed

**FORMALITIES :**

- ID card or passport required for all guests (babies included). Drivers licence not valid.
- Please pay attention to your personal belongings and/or make use of the safe at reception (if applicable) during your stay. Odalys Vacances cannot be held responsible for damage or theft of personal belongings.

---

## Directions

---



### **By car :**

Motorway AP7 : exit N° 37 CAMBRILS, after 200m at roundabout, follow the port or the beach. Take the first right (rue Barcelona), straight on, then take the third left (rue Verge Montserrat). Straight on, to the stop sign at the river, turn right and carry on to the beach. At the end of the road turn left towards the port – Club Nautique – boulevard,... go straight on, with the sea on your right, to n°38 where you will find the reception.

### **By train :**

Salou railway station

---

***The Odalys team wishes you a great holiday.***