

Erdeven Odalys Prestige Residence Le Château de Kéravéon

56410 ERDEVEN
Tel No. : +33 (0)2 97 56 77 23



Your destination

Enjoying the sunny climate of South Brittany, between the Quiberon peninsula and the beautiful Ria of Etel, Erdeven is a privileged spot for a carefree holiday with family or friends. Just a few kilometres from the fishing port and Etel marina, near Camac, Auray, Quiberon, Lorient and Vannes.

Sport & leisure activities

Water sports : along the 8km coast

Sandy beaches 4km away: untouched dunes

Water sports (sailing, sand-yachting, sea kayaking)

Outdoor activities:

Golf: Saint Laurent golf course (9 and 18 holes) 5 minutes away and Baden, Ploemeur, Queven et Sauzon (Belle Ile) nearby

Hiking and bike rides on cycle paths in and around Erdeven

Balneotherapy centre in Erdeven with special rates for Odalys guests

Balneotherapy in Erdeven (special rates for Odalys guests)

Discover the region

Visiting the exception sites in the Morbihan region :

Ria d'Etel, Camac, La Trinité sur Mer, Auray, the peninsula and the wild coast line of Quiberon, Vannes, l'île aux Moines island and the Golf of Morbihan, île de Groix, Belle Ile en Mer, Port Louis and Lorient...

Events - what's on

Jazz festival & Historic festival in Vannes: July

Festival of Chapels in Erdeven: August

Interceltic festival in Lorient: August

Festival Les Galettes du Monde in Saint Anne d'Auray: August

Your residence

The holiday rentals in the Prestige Residence Château de Keravéon, a magnificent stately home set in a lush 10-hectare park, are ideally located between Carnac and the beaches of La Trinité sur Mer. Enjoy the stunning natural setting with 300 hectares of sand dunes, 8km of coastline with 4 beautiful beaches and forests and 80km of trails ideal for biking, walking or horse-riding.

Accommodation is modern and stylish offering various types: studios for 2 or 4 people, 1 bedroom apartments for 4 people, 1 bedroom apartments for 4/6 people, 2 bedroom apartments for 6 people and 3 bedroom apartments for 8 people. Housed in the castle tower, the accommodation is perfectly equipped with all the necessary home comforts including TV, free Wifi access and an equipped kitchenette (ceramic hob, microwave / grill, dishwasher ...).

Certain 1 bedroom apartments for 4 people and 1-2 bedroom apartments for 4/6 people, are equipped for guests with disabilities.

At your disposal : outdoor, heated swimming pool with paddling pool (open from mid May to end of September), terrace with sun loungers, outdoor parking.

Accommodation

Studio apartment for 2 people (approx. 15 to 22m²)

Ground floor with terrace or upstairs (lift access)

Living room with double bed or double pull out bed

Equipped kitchenette (ceramic hob x2, microwave/grill, fridge/freezer, coffee machine, kettle, toaster)

Shower room with toilet (sometimes separate)

Studio apartment with sleeping alcove for 4 people (approx. 18 to 30m²)

Ground floor with terrace or upstairs (lift or stair access)

Living room with double pull out bed

Sleeping alcove (small bedroom with window) with double bed or 2 single beds or bunk beds

Equipped kitchenette (ceramic hob, microwave/grill, fridge/freezer, coffee machine, kettle, toaster)

Shower room with toilet (sometimes separate)

1 bedroom apartment for 4 people (approx. 30 to 35m²)

Ground floor with terrace or upstairs (lift or stair access)

Living room with double pull out bed

Bedroom with double bed

Equipped kitchenette (ceramic hob, microwave/grill, fridge/freezer, coffee machine, kettle, toaster)

Shower room with toilet (sometimes separate)

1 bedroom apartment with sleeping alcove for 4/6 people (approx. 35 to 55m²)

Ground floor with terrace or upstairs (lift or stair access)

Living room with double pull out bed

Bedroom with double bed

Sleeping alcove (small bedroom with window) with double bed or 2 single beds or bunk beds

Equipped kitchenette (ceramic hob, microwave/grill, fridge/freezer, coffee machine, kettle, toaster)

Shower room with toilet (sometimes separate)

2 bedroom apartment for 4/6 people (approx. 58m²)

Upstairs (stair access)

Living room with double pull out bed

2 bedrooms with double bed

Equipped kitchenette (ceramic hob x4, microwave/grill, fridge/freezer, coffee machine, kettle, toaster)

Shower room with toilet (sometimes separate)

2 bedroom apartment with sleeping alcove for 8 people (approx. 60m²)

Upstairs (lift or stair access)

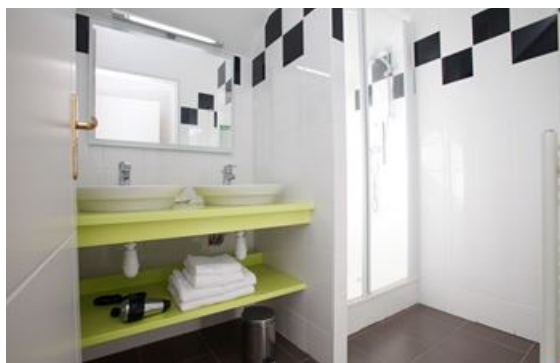
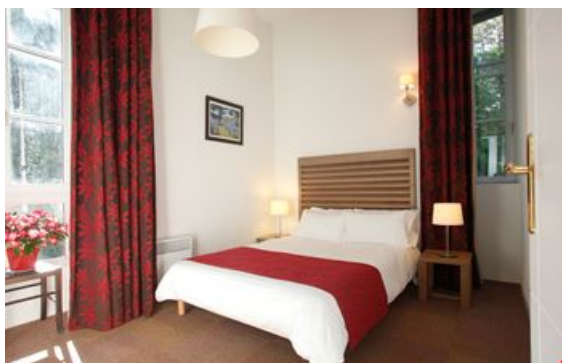
Living room with double pull out bed

2 bedrooms with double bed

Sleeping alcove (small bedroom with window) with 2 single beds or bunk beds

Equipped kitchenette (ceramic hob x4, microwave/grill, fridge/freezer, coffee machine, kettle, toaster)

Shower room with toilet (sometimes separate)



Rental conditions

Conditions :

Price in Euros , per accommodation, per stay

Deposit to be paid on site on arrival : €500 / apartment

Deposit given back after inventory carried out on the day of departure or sent by post if departure outside reception times.

Tourist tax to be paid on arrival : €2.30/person/night (valid for all guests over 18 years old)

Eco Tax to be paid on arrival : €0.20/person/day (valid for all guests over 14 years old)

Check-in & check-out :

Rental Formula : check-in from 4pm to 7pm (5pm to 8pm in high season), check-out before 10am

"Escapade" Formula : check-in from 4pm, (5pm in high season) check-out before 10am

In the case of late arrival please inform reception. You will be told the procedure to follow.

Please note :

In the case of a problem on your arrival or during your stay :

- Contact the reception and the personnel on site will do their best to resolve the problem.
- If the problem is not resolved on site, please contact the Odalys Vacances reservation call centre on 0825 562 562 from Monday to Saturday.

Reception

Monday, Tuesday, Thursday, Friday : 9.30am-12.30pm and 4pm-7pm

Saturday : 8am-10am and 5pm-8pm

Sunday : 10am-12noon, closed in the afternoon

Wednesday : Closed

Included in our prices

Rental Formula :

- Outdoor parking
- TV
- Bed linen
- Wifi
- Access to swimming pool and paddling pool (open from mid May to end of September)

"Escapade" Formula : short stays

- Services included in rental formula
- Bed linen
- Bathroom linen
- End of stay cleaning (except kitchen & washing up)

Not included in our prices

Price guide only, subject to modification, to be paid on site

Extra Services:

- Babyequipment (cot, high chair, bath) (pre-booking required) : €8/day, €25/stay

- Cleaning kit : €6
 - Laundry facilities : prices on site
 - End of stay cleaning on request (except kitchen) : from €72/apartment
 - Pets allowed*: €60/stay/animal (over 7 nights), €12/day/animal (under 7 nights)
- * Please inform residence at the time of booking. Please supply proof of vaccinations. Dogs must be kept on a lead at all times within the residence grounds.*

Please note : FORMALITIES :

- ID card or passport required for all guests (babies included). Drivers licence not valid.
- Please pay attention to your personal belongings and/or make use of the safe at reception (if applicable) during your stay. Odalys Vacances cannot be held responsible for damage or theft of personal belongings.

Odalys advantages

- **Free bed linen**, *in your holiday rental*
Don't overload your suitcases with bed linen, Odalys supplies everything for free !
- **Free Wifi in the residence !** *Stay connected during your holiday with a free Wifi connection at your residence !*
- **Ideal location**, *near Carnac and the beautiful, sandy beaches.*
- **Idyllic setting**, *residence in listed castle in 10-hectare park!*
- **Pets welcome**, *in your holiday rental.*
With Odalys, don't leave home without them !

Directions



By car :

At Vannes follow Lorient N165. At Auray, take the exit Carnac - Quiberon - Etel - Auray centre. At the roundabout, take the D22 towards Ploemel - Erdeven. After 2km, turn left on the D105 to Ploemel - Erdeven as far as Erdeven. After the signpost Erdeven, turn right on the C1 to Kéravéon, go past the gate to the park then turn left at the junction. Keep straight on to the chateau.

By train :

Auray railway station (15 km).

By plane :

Lorient Lann Bihoué airport (30 km).

The Odalys team wishes you a great holiday.