

Avène Odalys Residence Les Bains d'Avène

Lieu-dit Beau Désert Chemin départemental 8
34260 AVÈNE
Tel No. : +33 (0)4 67 95 18 01



Your destination

At the heart of a beautiful park, at the foot of the Cévennes mountains, the residence Les bains d'Avène, situated just 2km from the shops, comprises 60 apartments with balcony or terrace distributed over ten, 3-storey buildings. For visitors following a thermal treatment, the residence is just 800m from the thermal spa centre.

Sport & leisure activities

Circular village with tiny Streets, Roman ruins
Leisure park La Prade
Haut Languedoc Natural Park

Discover the region

The Haut Languedoc nature park
The cellars of Roquefort
The commune of Saint-Guilhem-le-désert
The lake of Salagou
Roquebrun or the Petit Nice
The Cirque de Mourèze

Your residence

At the heart of a beautiful park, at the foot of the Cévennes mountains, the residence Les bains d'Avene is situated just 2km from the shops and only 800m from the famous Avene thermal spa centre. The apartments in this residence sleep 4 to 6 people and are fully equipped with a kitchenette (electric hob, fridge, microwave or microwave/grill, dishwasher), bathroom or shower with toilet and television and WiFi (both at an extra charge).

Six 1 bedroom apartments for 4 people, on the ground floor, are equipped to welcome disabled guests.

At your disposal :

Outdoor (non-heated) swimming pool, open from May to October), Petanque grounds, Ping pong table, Laundry facilities (extra charge), Free outdoor car park.

Accommodation

1 bedroom apartment for 4 people (approx. 30m²)

Living room with clic clac sofa bed

Bedroom with a double bed (160cm x 190cm)

Equipped kitchenette (electric hob, fridge, microwave or microwave/grill, dishwasher)

Bathroom or shower room with toilet

2 bedroom apartment for 5 people (approx. 35m²)

Living room with clic clac bed

Bedroom with a double bed (160cm x 190cm)

Bedroom with single bed

Equipped kitchenette (electric hob, fridge, microwave or microwave/grill, dishwasher)

Bathroom or shower room with toilet

2 bedroom apartment for 6 people (approx. 40m²)

Living room with clic clac sofa bed

Bedroom with a double bed (160cm x 190cm)

Bedroom with bunk beds

Equipped kitchenette (electric hob, fridge, microwave or microwave/grill, dishwasher)

Bathroom or shower room with toilet

2 bedroom "Superior" apartment for 6 people (approx. 50m²)

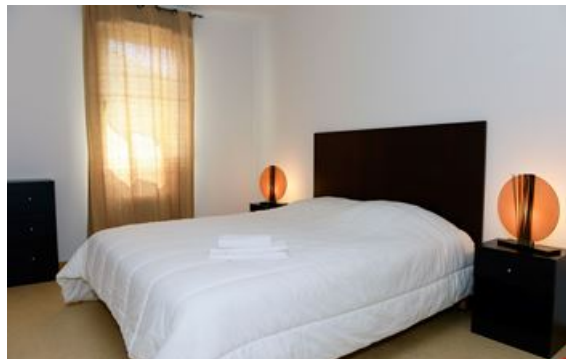
Living room with clic clac sofa bed

Bedroom with a double bed (160x190cm)

Bedroom with 2 single beds

Equipped kitchenette (electric hob, fridge, microwave or microwave/grill, dishwasher)

Bathroom or shower room with toilet



Rental conditions

Conditions :

Price in Euros, per accommodation, per stay

Deposit to be paid on site on arrival : €300 / apartment (2 payments : apartment + cleaning)

Tourist tax to be paid on arrival : €0.85/person/day (valid for all guests over 18 years old)

Check-in & check-out :

Check-in from 5pm.

In the case of late arrival please inform reception as soon as possible. You will be told the procedure to follow.

Check-out by 10am.

Please note :**In the case of a problem on your arrival or during your stay :**

- Contact the reception and the personnel on site will do their best to resolve the problem.
- If the problem is not resolved on site, please contact the Odalys Vacances reservation call centre on 0825 562 562 from Monday to Saturday.

Reception

Monday : 9am-12 noon, closed in the afternoon

Tuesday, Thursday, Friday : 9am-12 noon and 4pm-6pm

Saturday : 8am-12 noon and 2pm-6pm

Sunday : 10am-12 noon and 3pm-6pm ("Curistes" thermal cure formula)

Wednesday : closed

Included in our prices

- TV
- Access to outdoor, non-heated swimming pool (open from May to October)
- Access to petanque grounds
- Table tennis table
- Outdoor parking (1 space/apartment)

Not included in our prices

Price guide only, subject to modification, to be paid on site

Extra Services:

- Laundry facilities : prices on site
- Baby equipment (*high chair, cot and baby bath*) : €8/day, €25/stay (pre-booking required, subject to availability)
- Wifi access (2 connections only) : €8/day, €20/week, €30/2 weeks – Family pack (4 connections) : €35/week
- Bed linen (sheets & pillow cases) : €12/set
- Bathroom linen (1 bath towel, 1 hand towel) : €8/set
- End of stay cleaning on request (except kitchen) : from €62/apartment
- Pets allowed*: €60/stay/animal (over 7 nights), €12/day/animal (under 7 nights)

** Please inform residence at the time of booking. Please supply proof of vaccinations. Dogs must be kept on a lead at all times within the residence grounds.*

Please note :**FORMALITIES :**

- ID card or passport required for all guests (babies included). Drivers licence not valid.
- Please pay attention to your personal belongings and/or make use of the safe at reception (if applicable) during your stay. Odalys Vacances cannot be held responsible for damage or theft of personal belongings.

Directions



By car :

From Montpellier: take motorway and exit Saint Jean de Védas and follow Millau to Lodève, then take the D35 towards Lunas.

From Béziers: take motorway and exit Béziers Est, towards Bédarieux, then take the D35 towards Le Bousquet d'Orb.

From Clermont Ferrand: take the motorway A75, exit Lodève, then follow Lunas.

Train :

Railway stations nearby : Bédarieux, Ceilhes or Bousquet d'Orb (via Montpellier or Béziers).

By plane :

Montpellier or Béziers Vias airports

The Odalys team wishes you a great holiday.