

Strasbourg Odalys Apart'hotel Green Marsh

27/29 rue du Marais Vert
67000 STRASBOURG
Tel No. : +33 (0)3 90 20 45 45



Your destination

Strasbourg, capital of Alsace, one of the most beautiful European towns, is full of wonderful sites to see and visit not forgetting the castles, lakes and parks within easy reach of the town.

Sport & leisure activities

Notre Dame cathedral
La Petite France area of the town
The banks of the river Ill

Discover the region

Châteaux, lakes, mountains and the stunning landscapes
The Regional Park of the Northern Vosges
Vineyards - the wine route, covers 170km including all the wine-growing villages of the region
Towns and the villages in the area

Events - what's on

Christmas markets

Your residence

The Odalys Apart'hotel Green Marsh is located behind the Place des Halles, with over 100 shops, just 500m from the TGV station and just steps from the tramway station « Faubourg de Saverne ». Accommodation in this Apart'hotel consists of rooms which sleep 2 to 4 people with air-conditioning and kitchenette (ceramic hob, fridge / freezer, extractor hood, microwave / grill and dishwasher), a bathroom or shower room with hair-dryer and heated towel rail and toilet. Free TV and WiFi in all accommodation.

3 studios "Espace" for 2 people are equipped to welcome guests with disabilities.

At your disposal : Well-being area (extra charge) : pool, equipped with massage jets, hammam, showers, Indoor car park (extra charge), breakfast service.

Accommodation

Studio apartment for 2 people (approx. 18 to 22m²)

Living room sleeping 2 people
Kitchenette (ceramic hob, fridge, extractor hood, microwave/grill, dishwasher)
Bathroom (heated towel rail, hair dryer)

Studio apartment "Espace" for 2 people (approx. 20 to 27m²)

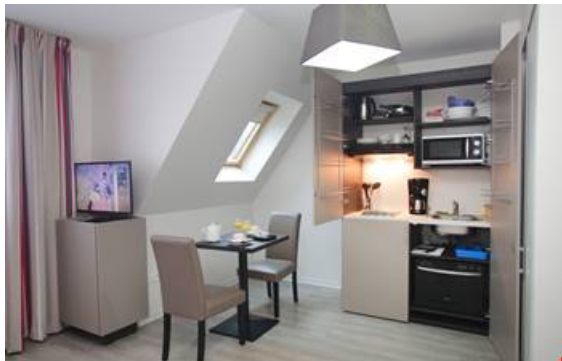
Living room sleeping 2 people
Kitchenette (ceramic hob, fridge, extractor hood, microwave/grill, dishwasher)
Bathroom (heated towel rail, hair dryer)

1 bedroom apartment for 4 people (approx. 29 to 35m²)

Living room sleeping 2 people
Bedroom sleeping 2 people
Kitchenette (ceramic hob, fridge, extractor hood, microwave/grill, dishwasher)
Bathroom (heated towel rail, hair dryer)

1 bedroom apartment "Espace" for 4 people (32 to 40m²)

Living room sleeping 2 people
Bedroom sleeping 2 people
Kitchenette (ceramic hob, fridge, extractor hood, microwave/grill, dishwasher)
Bathroom (heated towel rail, hair dryer)



Rental conditions

Conditions :

Price in Euros, per accommodation, per stay

Deposit to be paid on site on arrival for residential formulas : €300/apartment (medium stay : 5-28 nights), €500/apartment (long stay : over 29 nights)

Tourist tax to be paid on arrival : €2.45/day/person (valid for all guests over 18 years old)

Eco tax to be paid on arrival : €0.20/person

Check-in & check-out :

Check-in from 3pm

Check-out by 12 noon

Reception

Open 24/7
Tel: +33 (0)3 90 20 45 45

Included in our prices

- Air-conditioning
- Baby Equipment
- Access to well-being facilities



Hotel formula : *short stay - 1 to 4 nights*

- Bed linen (beds made on arrival)
- Bathroom linen and welcome pack
- Daily cleaning



Residential formula « Confort » : *medium stay 5 - 28 nights*

- Bed linen (beds made on arrival)
- Bathroom linen and welcome pack
- Weekly cleaning/bed & bathroom linen change (over 8 nights)
- Arrivals possible every day

Not included in our prices

Extra services to be paid on site:

- Laundry facilities : washing machine : €4/machine, tumble dryer : €2/machine
- Breakfast buffet : €12/adult, €7/child (4-12 years old), no charge for children under 4
- Bathroom linen (bath towel, hand towel) : €7/set
- Indoor car park (limited spaces) : €8.50/day, €50/week, €150/month
- Cleaning service on request (5-7 nights) : €12 (daily cleaning, beds made) or €40 (full weekly cleaning service)
- End of stay cleaning (residential formula/medium stay 5-28 nights) : from €60
- Pets allowed* : €10/animal/day

* Please supply proof of vaccinations. Dogs must be kept on a lead at all times within the building and grounds and are not allowed in the breakfast room.

Please note :

FORMALITIES :

- ID card or passport required for all guests (babies included). Drivers licence not valid.
- Please pay attention to your personal belongings and/or make use of the safe at reception (if applicable) during your stay. Odalys Vacances cannot be held responsible for damage or theft of personal belongings.

Odalys advantages

- **Free Wifi**, *within the Apart'hotel*
Stay connected during your city holiday thanks to the free Wifi connection available
- **Free TV with BeIn Sport**, *in your Apart'hotel*
- **Odalys well-being** *pool, hammam, etc...*
Pre-reservation required
- **Apart'hotel**, *right in the town centre*

Directions



By car :

From Paris, join the A4 motorway, to Strasbourg via Metz.
From Beaune, take the A6 motorway, towards Strasbourg/Mulhouse.
From Germany, join the B28/E52 at Offenbourg, to get to Kehl.

By train :

Strasbourg TGV station (500m from the Apart'hotel) - direct trains from Lille and Paris

By plane :

Strasbourg-Entzheim International Airport (10km from town centre). Shuttle train service.

The Odalys team wishes you a great holiday.