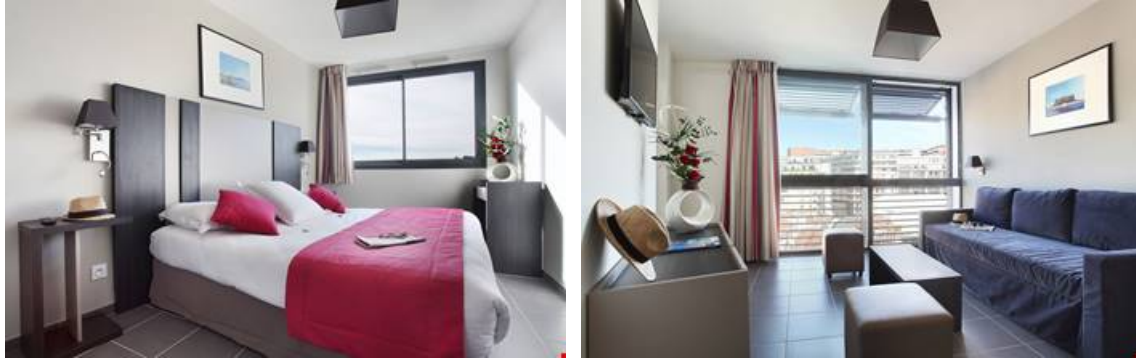


## Marseille Odalys Apart'hôtel Prado Castellane

114, rue du Rouet  
13008 MARSEILLE  
Tel No. : +33 (0)4 91 78 21 98



---

### Your destination

---

Marseille in the Provence Alpes Côte d'Azur region, dating back 2600 years, is a beautiful holiday destination with many assets to discover during your holiday in the South of France. A cosmopolitan city with a rich historical, artistic and gastronomical heritage and direct access to the Mediterranean Sea, Marseille offers a warm welcome to visitors from around the world.

---

### Sport & leisure activities

---

Notre Dame de la Garde, the Orange Velodrome stadium  
La Canebière, the Vieux Port (old port), the old town (the Panier district, the Major Cathedral)  
MUSEM museum, Mémorial de la Marseillaise, Longchamp palace (Beaux Arts and Natural history museums)  
The château d'If, the Frioul islands, beaches, the Calanques

---

### Discover the region

---

**Only 30 minutes from Marseille :**

Cassis, Aubagne

Aix en Provence

La Cote Bleue (Cassis, Le Rouet and other pretty coastal villages)

---

## Your residence

---

In the heart of the pleasant, residential 8th district of Marseille, your Odalys Apart'hotel Prado Castellane is 200m from the Prado Avenue and Perier metro stations taking you quickly and easily to the city centre of Marseille and only a 10 minute-walk from the famous Stade Velodrome. This Apart'hotel consists of 64 holiday rentals on 9 floors with lift ranging from standard and superior studios for 2 people to 1 bedroom apartments for 4 people. Well-equipped with all the home comforts for your holiday in Marseille, all accommodation is fitted with a functional kitchenette (fridge, electric hob, microwave, dishwasher), a bathroom or shower room with toilet and air-conditioning. You have a television and free internet access in all accommodation.

At your disposal: Luggage storage, Fitness room, Indoor parking, Reversible air-conditioning/heating, Laundry facilities (extra charge)

---

## Accommodation

---

### Studio apartment for 2 people (approx. 18 to 24m<sup>2</sup>)

Double bed (140x190cm)  
Kitchenette (hob, fridge, microwave)  
Bathroom with shower or bath with toilet

### Superior studio apartment for 2 people (approx. 25 to 35m<sup>2</sup>)

Double bed (140x190cm)  
Kitchenette (hob, fridge, microwave)  
Bathroom with shower or bath with toilet  
*Some studios have a balcony*

### 1 bedroom apartment for 4 people (approx. 33m<sup>2</sup>)

Living room with pull out beds for 2 people  
Bedroom with double bed or twin beds  
Kitchenette (hob, fridge, microwave)  
Bathroom with bath and toilet



---

## Rental conditions

---

### Conditions :

Price in Euros, per accommodation, per stay

Deposit to be paid on site on arrival for residential formulas : €300/apartment (medium stay : 5-28 nights), €500/apartment (long stay : over 29 nights)

Tourist tax to be paid on arrival : €1.65/day/person

### Check-in & check-out :

Check-in from 3pm

Check-out by 12 noon

---

## Included in our prices

---

- Luggage storage
- Air-conditioning

- Baby Equipment
- Access to fitness room



**Hotel formula** : *short stay - 1 to 4 nights*

- Bed linen (beds made on arrival)
- Bathroom linen and welcome pack
- Daily cleaning



**Residential formula « Confort »** : *medium stay 5 - 28 nights*

- Bed linen (beds made on arrival)
- Bathroom linen and welcome pack
- Weekly cleaning/bed & bathroom linen change (over 8 nights)
- Arrivals possible every day

---

### Not included in our prices

---

#### Services optionnels

- Breakfast buffet (breakfast room with terrace) : €12/adult, €7/child (4-12 years old), no charge for children under 4
- Bathroom linen (bath towel, hand towel) : €7/set
- Laundry facilities : washing machine : €4/machine, tumble dryer : €2/machine
- Indoor parking Indoor (allocated on arrival) : €13/day - €75/week - €250/month
- Cleaning service on request (5-7 nights) : €12 (daily cleaning, beds made) or €40 (full weekly cleaning service)
- End of stay cleaning (residential formula/medium stay 5-28 nights) : from €60
- Pets allowed\* : €10/animal/day

\* Please supply proof of vaccinations. Dogs must be kept on a lead at all times within the residence grounds.

## Odalys advantages

- **Free Wifi**, *within the Apart'hotel*  
Stay connected during your city holiday thanks to the free Wifi connection available
- **Conference facilities**, *organise your meetings with Odalys*  
Meeting room with a capacity of up to 12 people in U-shape set-up
- **Fitness room available**, *in your Apart'hotel with Bluetooth connection*
- **Free TV with Bien Sport**, *in your Apart'hotel*

## Directions



### By car

Motorway A7-A51 (Aix, Lyon) follow Gare Saint Charles, Porte d'Aix.  
Via the Littoral motorway A55 (Aix, Fos, Lyon, Montpellier) follow Joliette, Vieux Port.  
From the East motorway A50 (Cassis, Toulon, Nice) take avenue de Toulon, Bd. Rabateau.  
You can pick up the motorways A55 and A50 via the Prado Carénage Tunnel.

GPS co-ordinates : GPS : Latitude : 43.279609 | Longitude : 5.390404

### By train

Marseille Saint Charles station then metro (Ligne 2 - Perrier station) or taxi

### By air

Marseille Provence airport (30km)

***The Odalys team wishes you a great holiday.***