

## Marseille Odalys Apart'hotel Marseille Canebière

9, rue Sénac  
13001 MARSEILLE  
Tel No. : +33 (0)4 91 58 20 83



---

### Your destination

---

Marseille in the Provence Alpes Côte d'Azur region, dating back 2600 years, is a beautiful holiday destination with many assets to discover during your holiday in the South of France. A cosmopolitan city with a rich historical, artistic and gastronomical heritage and direct access to the Mediterranean Sea, Marseille offers a warm welcome to visitors from around the world.

---

### Sport & leisure activities

---

Notre Dame de la Garde, the Orange Velodrome stadium  
La Canebière, the Vieux Port (old port), the old town (the Panier district, the Major Cathedral)  
MUSEUM, Memorial de la Marseillaise, Longchamp palace (Beaux Arts and Natural history museums)  
The château d'If, the Frioul islands, beaches, the Calanques

---

### Discover the region

---

**Only 30 minutes from Marseille :**

Cassis, Aubagne

Aix en Provence

La Cote Bleue (Cassis, Le Rouet and other pretty coastal villages)

---

## Your residence

---

The Odalys Apart'hotel Marseille Canebiere is ideally situated in the heart of Marseille close to the famous Old Port and just 100m from metro and tramway stations on the recently renovated Canebiere. With the Hotel Formula (short stay - 1 to 4 nights) you have the choice of double or twin bedrooms or a junior suite for 2/4 people. With the Residential Formulas (medium stay 5-28 nights & long stay over 29 nights), you have the choice of 1 bedroom apartments for 4 people with sofa bed in the living room and either twin beds or double bed in the bedroom. All holiday rentals are fully equipped with kitchenette (fridge, electric hob, microwave), shower room with toilet, free television and Internet connection.

At your disposal : Sports room, laundry facilities (extra charge), bike storage, Gambetta public car park 50m away

---

## Accommodation

---

### Studio for 1/2 people (approx. 24m<sup>2</sup>)

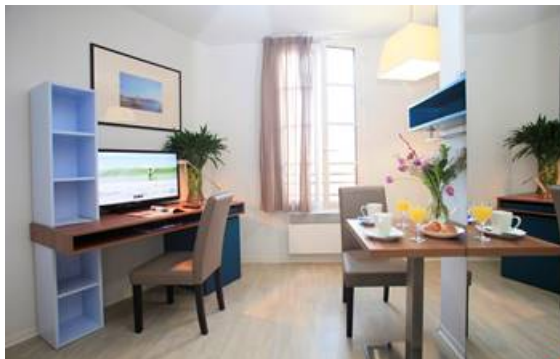
Double bed  
Equipped kitchenette  
Shower room with toilet

### Studio Superieur for 1/2 people (approx. 24m<sup>2</sup>)

Double bed  
Equipped kitchen  
Shower room with toilet  
TV

### Apartment for 3/4 people (approx. 31m<sup>2</sup>)

Pull out beds for 2 people  
Double bed  
Equipped kitchenette  
Shower room with toilet



---

## Rental conditions

---

### Conditions :

Price in Euros, per accommodation, per stay

Deposit to be paid on site on arrival for residential formulas : €300/apartment (medium stay : 5-28 nights), €500/apartment (long stay : over 29 nights)

Tourist tax to be paid on arrival : €2.53/person/night (valid for all guests over 18 years old)

### Check-in & check-out :

Check-in from 4pm

Check-out by 11am

---

## Reception

---

Reception/night-time security : 24/7

Tel: +33 (0)4 91 58 20 83

---

## Included in our prices

---

- Wifi access
- TV
- Daily cleaning



**Hotel formula** : *short stay - 1 to 4 nights*

- Bed linen (beds made on arrival)
- Bathroom linen and welcome pack
- Daily cleaning



**Residential formula « Confort »** : *medium stay 5 - 28 nights*

- Bed linen (beds made on arrival)
- Bathroom linen and welcome pack
- Weekly cleaning/bed & bathroom linen change (over 8 nights)
- Arrivals possible every day

---

## Not included in our prices

---

### Extra services to be paid on site:

- Laundry facilities : washing machine : €4/machine, tumble dryer : €2/machine
- Breakfast buffet : €8/adult, €6/child (4-12 years old), no charge for children under 4
- Bathroom linen (bath towel, hand towel) : €7/set
- Cleaning service on request (5-7 nights) : €9 (daily cleaning, beds made) or €40 (full weekly cleaning service)
- End of stay cleaning (residential formula/medium stay 5-28 nights) : from €60
- Pets allowed\* : €10/animal/day

\* Please supply proof of vaccinations. Dogs must be kept on a lead at all times within the building and grounds.

### Please note :

#### FORMALITIES :

- ID card or passport required for all guests (babies included). Drivers licence not valid.
- Please pay attention to your personal belongings and/or make use of the safe at reception (if applicable) during your stay. Odalys Vacances cannot be held responsible for damage or theft of personal belongings.

## Odalys advantages

- **Free Wifi**, *within the Apart'hotel*  
Stay connected during your city holiday thanks to the free Wifi connection available.
- **Close to public transport**, *tramway & metro*
- **Fitness room available**, *in your Apart'hotel*
- **Ideal location in town centre**, *with night-time reception & security*

## Directions



### By car :

From the North : A7-A51 (follow airport, Aix, Lyon), A55

(follow airport, Aix, Fos, Lyon, Montpellier)

From the East : A50 (Cassis, Toulon, Nice), join the A55 or A50 via the Prado Carénage tunnel through Marseille.

### By train :

Marseille Saint Charles train station (10 mins on foot)

### By plane :

Marseille Provence airport (25km)

***The Odalys team wishes you a great holiday.***