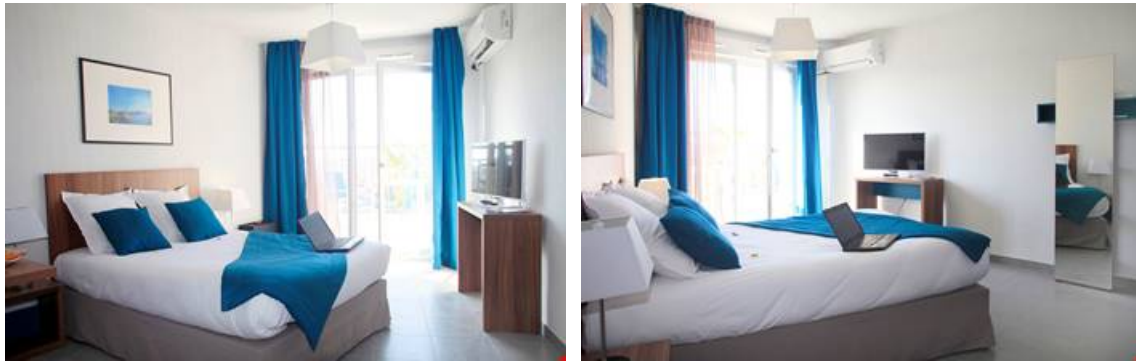


Marseille Odalys Apart'hotel Blancarde l'Alhambra

Appart'Hôtel Odalys Blancarde l'Alhambra 334, Boulevard Chave
13005 MARSEILLE 5EME ARRONDISSEMENT
Tel No. : +33 (0)4 91 69 62 26



Your destination

Marseille in the Provence Alpes Côte d'Azur region, dating back 2600 years, is a beautiful holiday destination with many assets to discover during your holiday in the South of France. A cosmopolitan city with a rich historical, artistic and gastronomical heritage and direct access to the Mediterranean Sea, Marseille offers a warm welcome to visitors from around the world.

Sport & leisure activities

Notre Dame de la Garde, the Orange Velodrome stadium
La Canebière, the Vieux Port (old port), the old town (the Panier district, the Major Cathedral)
MUSEUM, Memorial de la Marseillaise, Longchamp palace (Beaux Arts and Natural history museums)
The château d'If, the Frioul islands, beaches, the Calanques

Discover the region

Only 30 minutes from Marseille :

Cassis, Aubagne

Aix en Provence

La Cote Bleue (Cassis Le Rouet and other pretty coastal villages)

Your residence

The Odalys Apart'hotel Blancarde l'Alhambra, ideally situated in the city of Marseille, is in the quiet, residential Blancarde area with both tram lines and the metro station (Blancarde) within a few meters taking you to the city centre, the famous Old Port of Marseille and Universities. All holiday rentals in this new Odalys Apart'hotel are equipped with a kitchenette (microwave, electric hob, fridge), a shower room with toilet and lounge with sleeping arrangements.

At your disposal : Internet connection, Lounge area, Fitness room, Bicycle storage, Car park (extra charge), luggage storage.

Accommodation

Studio apartment for 2 people (approx. 16 to 20m²)

Living room with double bed
Kitchenette (hob, fridge, microwave)
Shower room with toilet

1 bedroom apartment for 4 people (approx. 31 to 38m²)

Living room with pull out beds
Bedroom with double bed
Kitchenette (hob, fridge, microwave)
Shower room with toilet



Rental conditions

Conditions :

Price in Euros, per accommodation, per stay
Deposit to be paid on site on arrival for residential formulas : €300/apartment
Tourist tax to be paid on arrival : €2.53/person/night (valid for all guests over 18 years old)

Check-in & check-out :

Check-in from 3pm (hotel formula), 4pm (residential formula)
Check-out by 12 noon

Included in our prices

- Access to lounge and fitness room
- Cleaning in communal areas
- Bicycle storage
- Baggage storage

H **Hotel formula** : *short stay - 1 to 4 nights*

- Bed linen (beds made on arrival)
- Bathroom linen and welcome pack
- Daily cleaning

R+ **Residential formula « Confort »** : *medium stay 5 - 28 nights*

- Bed linen (beds made on arrival)
- Bathroom linen and welcome pack
- Weekly cleaning/bed & bathroom linen change (over 8 nights)
- Arrivals possible every day

Not included in our prices

Extra services to be paid on site:

- Laundry facilities
- Bed and bathroom linen kit (sheets, towels, etc) : €12/kit
- Underground car park : €10/day, €60/week
- End of stay cleaning (residential formula) : from €35
- Pets allowed* : €10/animal/day

** Please supply proof of vaccinations. Dogs must be kept on a lead at all times within the building and grounds.*

Please note :

FORMALITIES :

- ID card or passport required for all guests (babies included). Drivers licence not valid.
- Please pay attention to your personal belongings and/or make use of the safe at reception (if applicable) during your stay. Odalys Vacances cannot be held responsible for damage or theft of personal belongings.

Odalys advantages

- **Conference facilities**, *organise your meetings with Odalys*
Meeting room with a capacity of up to 15 people
- **Free Wifi**, *within the Apart'hotel*
Stay connected during your city holiday thanks to the free Wifi connection available
- **Close to public transport**, *tramway & metro*
- **Fitness room available**, *in your Apart'hotel*
- **New Apart'hotel**, *in quiet area*
- **Air-conditioning**, *in all accommodation*

Directions



By train :

Saint Charles station, then metro Ligne 1 - Blancarde station

By plane :

Marseille Provence (20 m). Bus shuttle service or taxi

GPS co-ordinates : Lat 43.295201 - Long 5.405619

The Odalys team wishes you a great holiday.