

## Lyon Odalys Apart'hotel Confluence

7, cours Bayard  
69002 LYON  
Tel No. : +33 (0)4 78 82 49 02



---

### Your destination

---

The rich heritage of Lyon, 500 hectares of which has been officially recognized by UNESCO, reflects the different eras and the history of the city.

---

### Sport & leisure activities

---

Hôtel de Ville, Fourvière Basilica, Opera, Place Bellecour, Saint Jean cathedral, the old town of Lyon...  
Museum des Confluences  
La Tête d'Or, de Miribel, de Gerland parks  
Cycle paths on the banks of the Rhône  
Gastronomy & famous wines from the region

---

### Discover the region

---

Foothills around Lyon  
The medieval city of Pérouges

---

### Events - what's on

---

"Nuits sonores" festival (festival of electronic music): May/June

---

## Your residence

---

The Odalys Apart'hotel Confluence is right in the heart of the new, contemporary Confluence district with shops and facilities nearby and a Tramway stop (T1, Sainte Blandine) leading to the train station and metro station just 200m away. Ideally located, this Apart'hotel consists of fully equipped accommodation ranging from studio apartments for 2 people to Junior suites for 2/4 people. All have an equipped kitchenette, shower room with toilet, hair-dryer and heated towel rail, television (Canal+, Canal+ Sport, Canal+ Cinema) and free WiFi.

At your disposal : Indoor, heated swimming pool, Fitness room (open 10am to 10pm), Laundry facilities (extra charge), Underground car park (extra charge, limited spaces), Outdoor public car park near the residence (extra charge).

---

## Accommodation

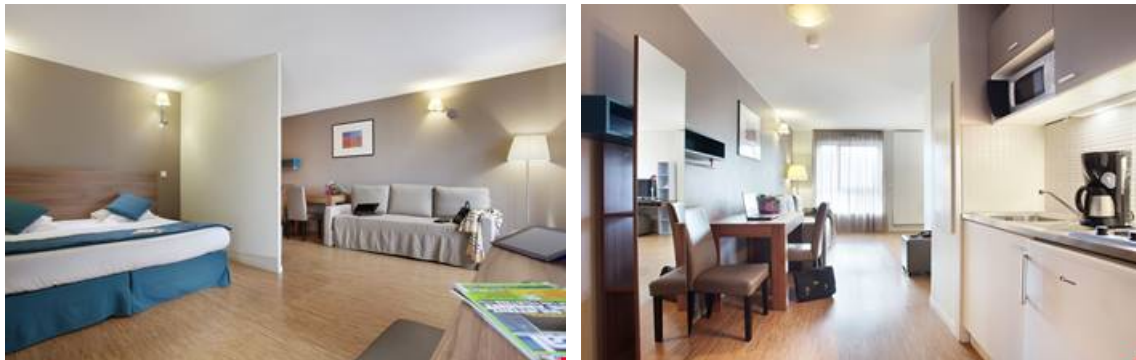
---

### Studio apartment for 2 people (approx. 23m<sup>2</sup>)

Living room with double bed  
Equipped kitchenette (fridge, ceramic hob, microwave, kettle, coffee machine)  
Shower room with toilet

### Junior Suite 2/4 people (approx. 29 to 33m<sup>2</sup>)

Living room with pull-out beds for 2 people  
Bedroom with 2 single beds or double bed  
Equipped kitchenette (fridge, ceramic hob, microwave, kettle, coffee machine)  
Bathroom with toilet



---

## Rental conditions

---

### Conditions :

Price in Euros, per accommodation, per stay  
Deposit to be paid on site on arrival by credit card imprint : €300/apartment - ask at reception for residential formulas over 30 nights  
Tourist tax to be paid on arrival : €2.53/person/night (valid for all guests over 18 years old)

### Check-in & check-out :

Check-in from 3pm  
Check-out by 12 noon

---

## Reception

---

Open 24/7  
Tel: +33 (0)4 78 82 49 02

---

## Included in our prices

---

- Access to indoor, heated pool (closed from 06/03 to 10/03/17)  
- Access to fitness room

- Baby Equipment (subject to availability)
- Wifi access
- TV (Canal+, Canal+ Sport, Canal+ Cinema)



**Hotel formula** : *short stay - 1 to 4 nights*

- Bed linen (beds made on arrival)
- Bathroom linen and welcome pack
- Daily cleaning



**Residential formula « Confort »** : *medium stay 5 - 28 nights*

- Bed linen (beds made on arrival)
- Bathroom linen and welcome pack
- Weekly cleaning/bed & bathroom linen change (over 8 nights)
- Arrivals possible every day

---

## Not included in our prices

---

### Extra services to be paid on site:

- Laundry facilities : washing machine : €4/machine, tumble dryer : €3/machine
- Breakfast buffet : €12/adult, €7/child (4-12 years old), no charge for children under 4
- Bathroom linen (bath towel, hand towel) : €7/set
- Underground car park (limited places, phone on day of arrival to check availability) : €12/day
- Cleaning service on request (5-7 nights) : from €9 (beds made) or from €40 (full weekly cleaning service or end of stay cleaning)
- End of stay cleaning (residential formula/medium stay 5-28 nights) : from €60
- Pets allowed\* : €10/animal/day

\* Please supply proof of vaccinations. Dogs must be kept on a lead at all times within the building and grounds.

### Please note :

#### **FORMALITIES :**

- ID card or passport required for all guests (babies included). Drivers licence not valid.
- Please pay attention to your personal belongings and/or make use of the safe at reception (if applicable) during your stay. Odalys Vacances cannot be held responsible for damage or theft of personal belongings.

## Odalys advantages

- **Free Wifi**, *within the Apart'hotel*

Stay connected during your city holiday thanks to the free Wifi connection available

- **Free TV with Canal+**, *in your Apart'hotel*

Canal+, Canal+ Sport, Canal+ Cinema

- **Fitness room available**, *in your Apart'hotel*

Open from 10am to 10pm

- **Indoor, heated swimming pool**, *in your Apart'hotel*

Open from 10am to 10pm

## Directions



### By car :

Just a few minutes from the A6 (Paris), A7 (Marseille).

From the A7 take the A42/A43 Boulevard Périphérique exit and follow Gare de Perrache. Turn left onto Cours Charlemagne/Pont Pasteur then the Quai Perrache.

Continue on the Cours Charlemagne then turn left onto Cours Bayard. Your Apart'hotel is on your right.

From the A6 take exit 39B Perrache/Lyon centre. Continue onto Quai Perrache. Continue on the Cours Charlemagne then turn left onto Cours Bayard. Your Apart'hotel is on your right.

### By train :

Lyon Perrache TGV train station (3 minutes)

Lyon Part Dieu TGV train station (15 minutes)

Tramway T1 to Saint Blandine (200m from the Apart'hotel)

### By public transport :

Metro line A (10-minute walk from the Apart'hotel), Perrache station

Bus Lines 63, S1 Perrache : C10-C19-C20-C21-C22 + lines 8, 15, 31, 46, 49,

55, 60

Bike rental : Vélo'v station Sainte Blandine-Cours

Charlemagne 2-minute walk from Apart'hotel

### By plane :

Lyon Saint Exupéry international airport (23km) and Lyon-

Bron business airport (8km)

*The Odalys team wishes you a great holiday.*