

Guidel Plages Odalys Prestige Residence Fleur de Sel

RD 152 - La Falaise
56520 GUIDEL PLAGES
Tel No. : +33 (0)2 97 24 41 74 - Fax No. : +33 (0)2 97 24 45 23



Your destination

Guidel extends to the far west of Lorient (15km away), sharing the Laita river with its Finistere neighbour. Famous for its sandy beaches, its rich natural flora and fauna, its religious heritage (7 chapels), art galleries and music festivals, Guidel is a lively town ideal for an active and relaxing family holiday in Brittany.

Sport & leisure activities

Beaches

Water sports : sailing, wind surfing, surfing, kite surfing canoeing, etc.
Cycling paths (20km)

Discover the region

The island of Groix and Belle Ile
Nature reserve of the Grand Loch marshes
Lakes of Lannédec, la Laita
Zoo in Pont Scorff, animal park in Quinquis
Aquarium in Vannes
Submarine museum at Lorient
Abbey of Saint Maurice
Saint Mathieu Church

Events - what's on

Interceltic festival in Lorient: August
Medieval festivities in Hennebont: July
Polignac (music) festival in Guidel: July
Rock l'Hand festival in Pouldu: August
10th edition of La Nuit étoilée (fireworks display, dancing, street markets...): August

Your residence

The Prestige Residence Fleur de Sel facing the sea with shops are within 4km offers accommodation located in 3 modern buildings. They include 1 bedroom apartments designed for 4 people and 2 bedroom apartments for 6 people. Some of these apartments are duplex and have a sea view. The interiors have a contemporary design with modern furniture and are all perfectly equipped including a living room with sofa and TV, a functional kitchen (ceramic hob, microwave / grill, dishwasher ...), bathroom or shower with toilet and free Wifi access.

One 2 bedroom apartment (approx. 45 to 49m²) for 6 people is adapted for guests with disabilities with access via lift, adapted shower room with toilet, raised double bed in bedroom.

At your disposal:

Free outdoor parking, indoor parking (extra charge), laundry facilities (extra charge), outdoor, heated swimming pool with paddling pool (open from June to September) Terrace with sun loungers, Spa facilities with indoor, heated pool with aquatic circuit, sauna and hammam and fitness room. Beauty treatments and massage available. (The spa area is accessible to guests from 16 years old)

Accommodation

1 bedroom apartment for 4 people (approx. 31m²)

Living room with 2 pull-out beds (two x 80cmx200cm)

Bedroom with doubled bed (140x190cm)

Equipped kitchenette (ceramic hob x2, microwave/grill, dishwasher, cutlery, crockery, coffee machine, fridge, kettle)

Bathroom

Separate toilet

Balcony or terrace

1 bedroom apartment for 4 people (approx. 31m²) - sea side

Living room with 2 pull-out beds (two x 80cmx200cm)

Bedroom with double bed (140x190cm)

Equipped kitchenette (ceramic hob x2, microwave/grill, dishwasher, cutlery, crockery, coffee machine, fridge)

Bathroom

Separate toilet

Balcony

2 bedroom apartment for 6 people (approx. 42 to 49m²)

Living room with 2 pull-out beds (two x 80cmx200cm)

Bedroom with double bed

Bedroom with 2 single beds

Equipped kitchenette (ceramic hob x4, microwave/grill, dishwasher, cutlery, crockery, coffee machine, fridge/freezer)

Bathroom

Separate toilet

Balcony or terrace

2 bedroom apartment for 6 people (approx. 42 to 49m²) - facing the sea

Living room sleeping 2 people

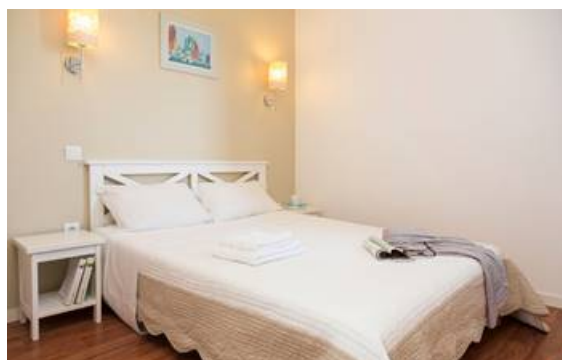
Bedroom with double bed

Bedroom with 2 single beds

Equipped kitchenette (ceramic hob x4, microwave/grill, dishwasher, cutlery, crockery, coffee machine, fridge/freezer)

Bathroom

Separate toilet



Rental conditions

Conditions :

Price in Euros, per accommodation, per stay

Prices valid until 31/03/19. Subject to modification after this date.

Deposit to be paid on site on arrival : €500 / apartment (2 payments : apartment + cleaning)

Deposit given back after inventory carried out on the day of departure or sent by post if departure/inventory outside reception times.

Tourist tax to be paid on arrival : €1/person/day (valid for all guests over 18 years old)

Eco Tax to be paid on arrival : €0.20/person/day

Check-in & check-out :

Rental Formula : check-in from 5pm, check-out before 10am

"Escapade" Formula : check-in from 4pm, check-out before 11am

In the case of late arrival please inform reception. You will be told the procedure to follow.

Reception

Opening hours vary during the season

Monday, Tuesday, Thursday, Friday : 9am-12 noon and 4pm-7pm

Saturday : 8am-12noon and 5pm-8pm

Sunday : 8am-12noon (July & August), closed in the afternoon (all season)

Wednesday : closed all day

Included in our prices

Rental Formula :

- Outdoor parking
- TV
- Bed linen
- Bathroom linen
- Wifi
- Access to swimming pool and paddling pool

"Escapade" Formula : short stays

- Services included in rental formula
- Bed linen (beds made on arrival except sofa beds)
- Bathroom linen
- End of stay cleaning (except kitchen & washing up)

Not included in our prices

Price guide only, subject to modification, to be paid on site

Extra Services:

- Baby equipment (cot, high chair, bath) (pre-booking required) : €8/day, €25/stay
- Laundry facilities : prices on site
- Indoor parking : €30
- End of stay cleaning on request (except kitchen) : from €72/apartment
- Pets allowed* : €60/stay/animal (over 7 nights), €12/day/animal (under 7 nights)

** Please inform residence at the time of booking. Please supply proof of vaccinations. Dogs must be kept on a lead at all times within the residence grounds.*

Please note :

FORMALITIES :

- ID card or passport required for all guests (babies included). Drivers licence not valid.
- Please pay attention to your personal belongings and/or make use of the safe at reception (if applicable) during your stay. Odalys Vacances cannot be held responsible for damage or theft of personal belongings.

Odalys advantages

- **Odalys well-being, balneo, spa facing the Ocean**
 - €25 (public price)
 - €15 (Odalys guests) on short stays
 - FREE access for 5 half-days/week (for minimum 7-night bookings) accessible to guests from 16 years old only. Massage and beauty treatments at an extra charge. For more information : Tel: +33 (0)2 97 56 79 65.
- **Free bed linen, in your holiday rental**
- **Outdoor heated pool, open from mid June to end of September!**
- **Free Wifi in the residence ! Stay connected during your holiday with a free Wifi connection at your residence**
- **Pets welcome, in your holiday rental**
On your Odalys holiday, don't leave home without them !

Directions



By car :

Motorway Nantes, Rennes, towards Lorient and join the N165. Exit N°45 Gestel Guidel and direction Guidel Plages.

By train :

Lorient railway station (17 km) Bus link (35 min from the station, line 60 arrives 800m from the residence), line 55 in July & August arrives opposite the residence

By plane :

Lorient Lann-Bihoué airport (12 km)

The Odalys team wishes you a great holiday.